

BY GALIA

# FERN DRESS HACK

## Shorten Bodice

TUTORIAL



BYGALIAPATTERNS.ETSY.COM  
BYGALIA.NET

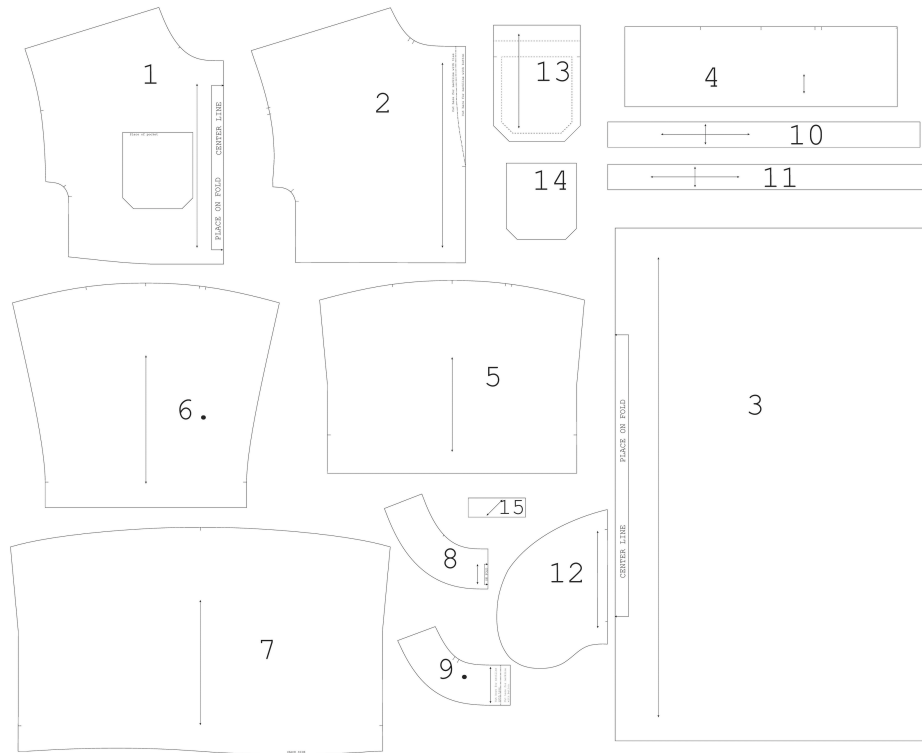
2025ByGalia.net  
All rights reserved.  
You may not copy or sell this pattern in any way.  
For personal use only.

# 1.OVERVIEW

In this tutorial I'll guide you through drafting Fern dress with shortened bodice.



## PATTERN PIECES



1. Bodice front, cut 1 on fold fabric.
2. Bodice back, cut 2 (one pair), fabric.
3. Skirt Front and Skirt Back, cut 2 on fold fabric.
4. Cuffs, cut 2 (one pair) fabric.
5. Short sleeve with cuffs, cut 2 (one pair) fabric.
6. Three quarter straight sleeve, cut 2 (one pair) fabric.
7. Puffed Sleeve, cut 2 (one pair) fabric.
8. Facing Front, cut 1 on fold fabric and cut 1 on fold Fusible interfacing.
9. Facing Back, cut 2 (one pair) fabric and cut 2 (one pair) Fusible interfacing.
10. Waist ties, cut 4 (two pairs) fabric.
11. Neckline ties for back neckline with ties, cut 2 (one pair) fabric.
12. Inseam pockets, cut 4 (two pairs) fabric.
13. Chest pocket, cut 1 fabric.
14. TEMPLATE Chest pocket, cut 1 paper.
15. Loop for back neckline with button, cut 1 fabric.

### YOU WILL NEED:

- Pattern pieces #1, #2 and #3
- Paper
- Pencil
- Ruler
- Tape
- Measuring tape
- Paper scissors
- Paper weights

---

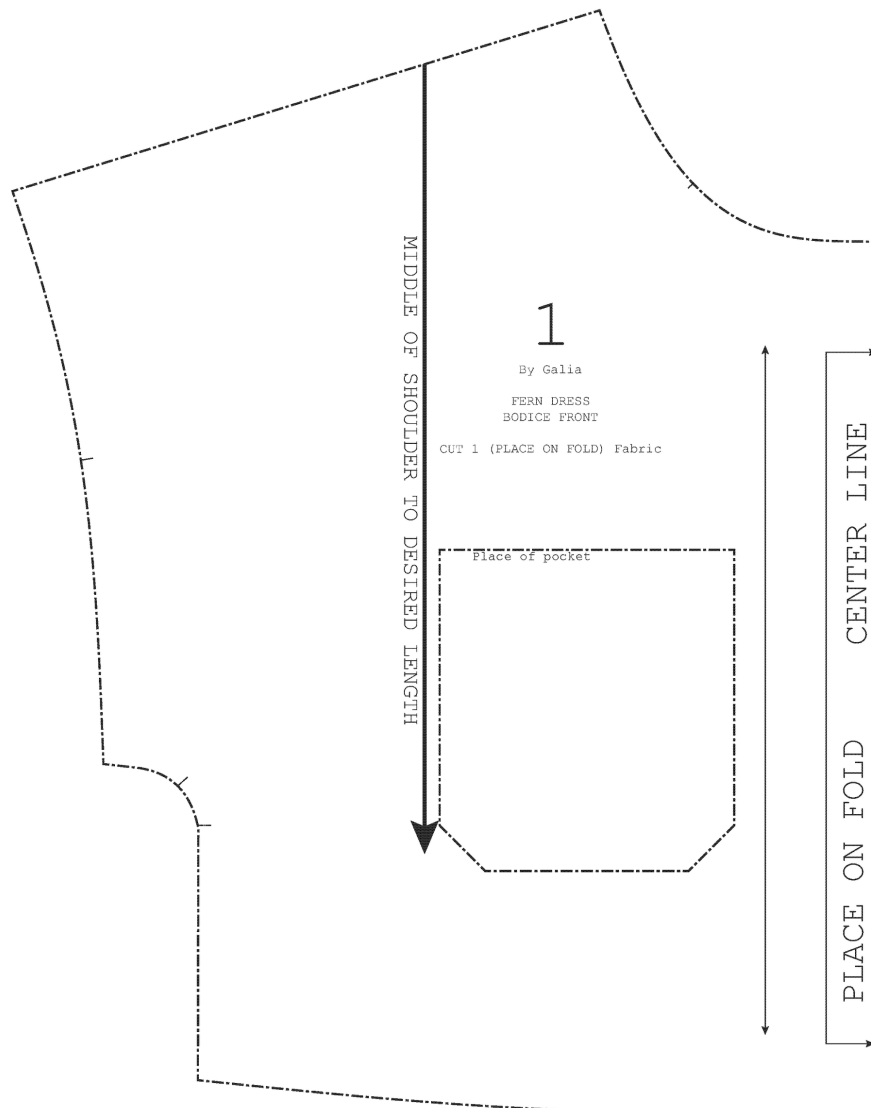
## 2. HOW TO DRAFT THE FERN DRESS WITH SHIFTED WAIST SEAM

### 1. Work with Front Bodice Piece #1:

Measure on your body Length from middle of your shoulder down to the desired length, vertically.

For example, I want the bodice to be 29.5 cm (11 5/8 in).

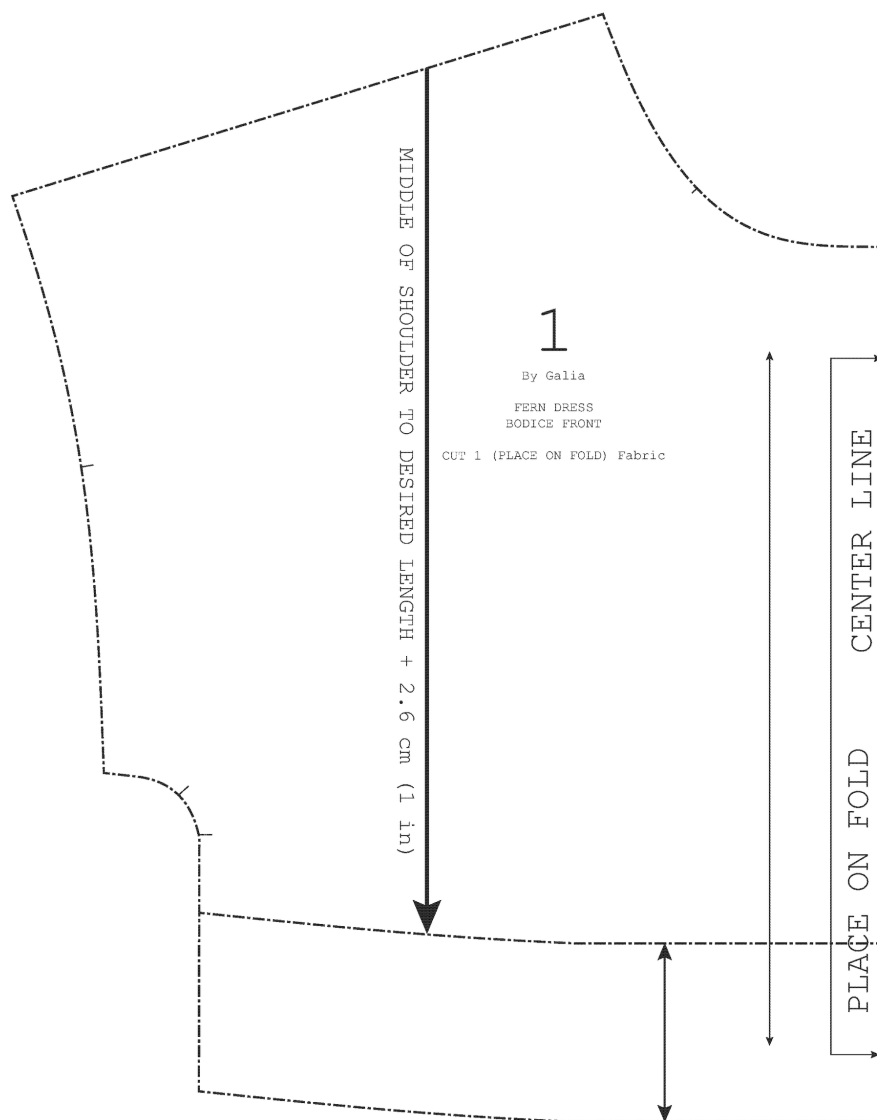
Measure and mark this length + 2.6 cm (1 in) on the bodice.



---

## 2. Work with Front Bodice Piece #1:

Draw a line, parallel to the waist seam, where the new bodice length ends. Measure also the distance between the old waist seam and the new one. If you would like to shorten the bodice with the same proportions as on the pictures, this distance is 6.6 cm (2 5/8 in).

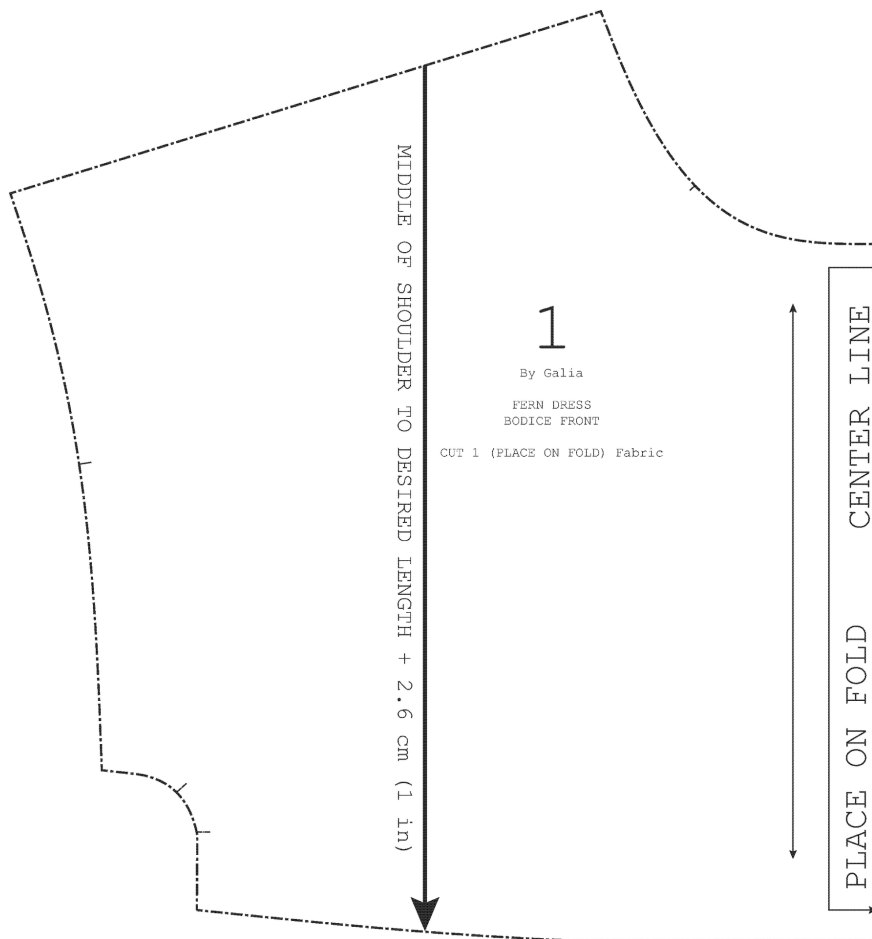


---

### 3. Cut the adjusted pattern piece #1:

Cut the pattern piece #1 with the new level of waist seam.

If you would like to keep the chest pocket, determine its new place, according to the new bodice length (the pocket can be placed at the final steps of sewing the dress, when you can try it on).

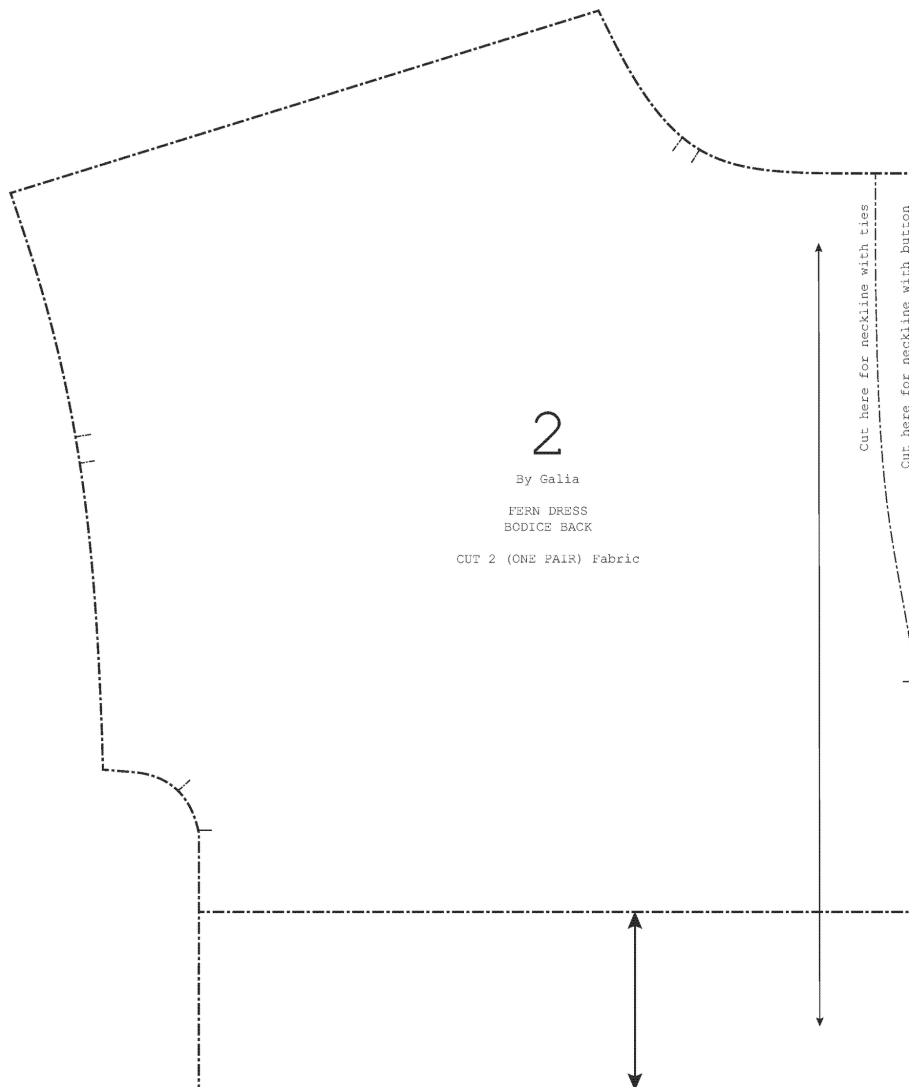


---

#### 4. Work with Front Bodice Piece #2:

Mark the distance between the old waist seam and the new one (same as on the front piece), upwards.

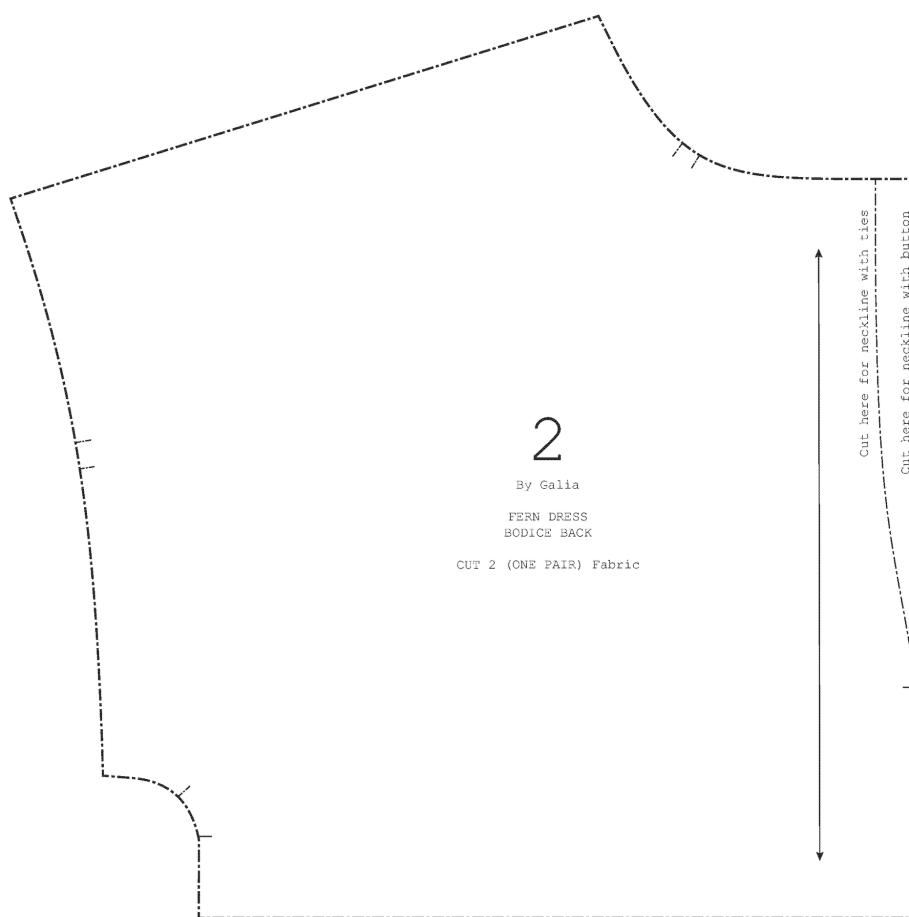
Draw a line, parallel to the waist seam.



---

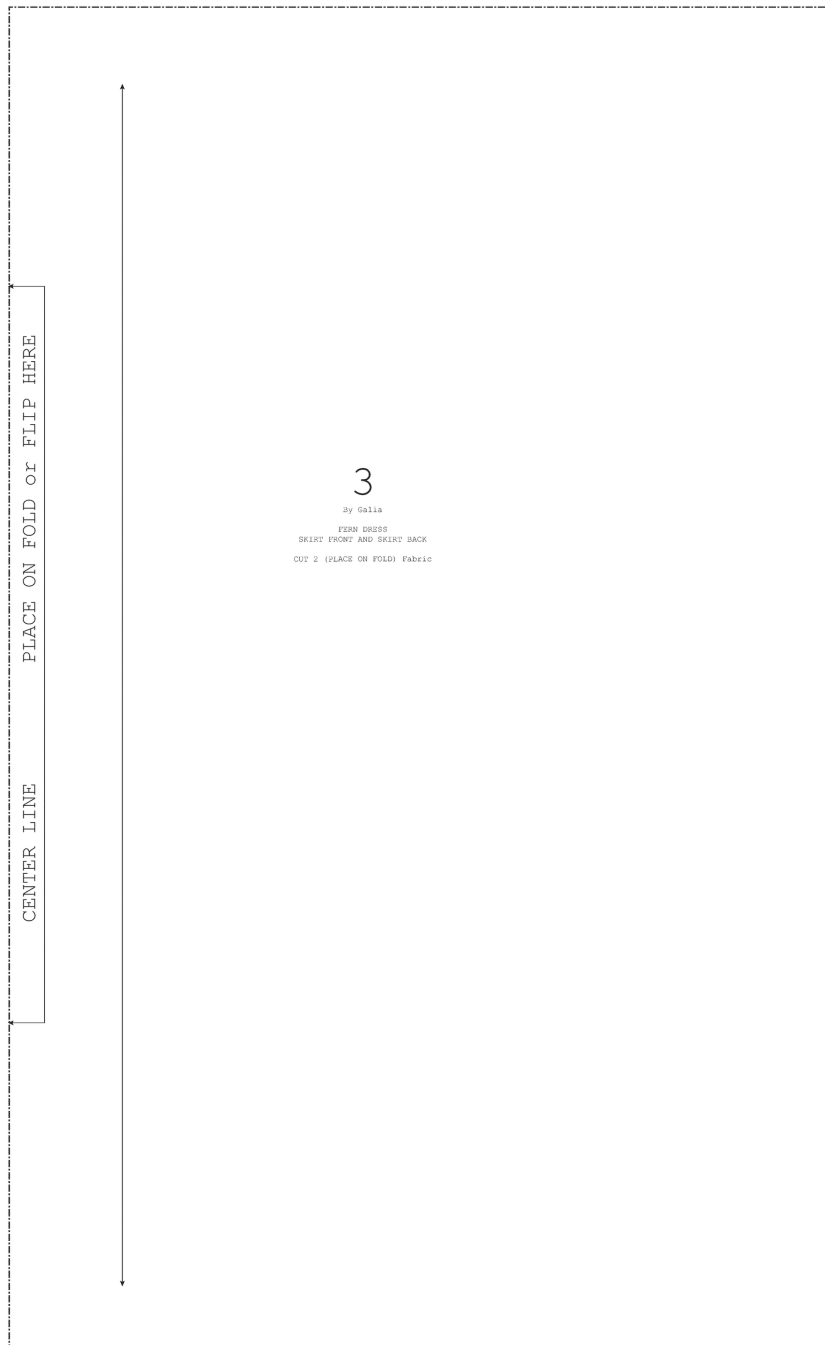
**5. Cut the adjusted pattern piece #2:**

Cut the pattern piece #2 with the new level of waist seam.



---

## 6. Work with Skirt Piece #3.



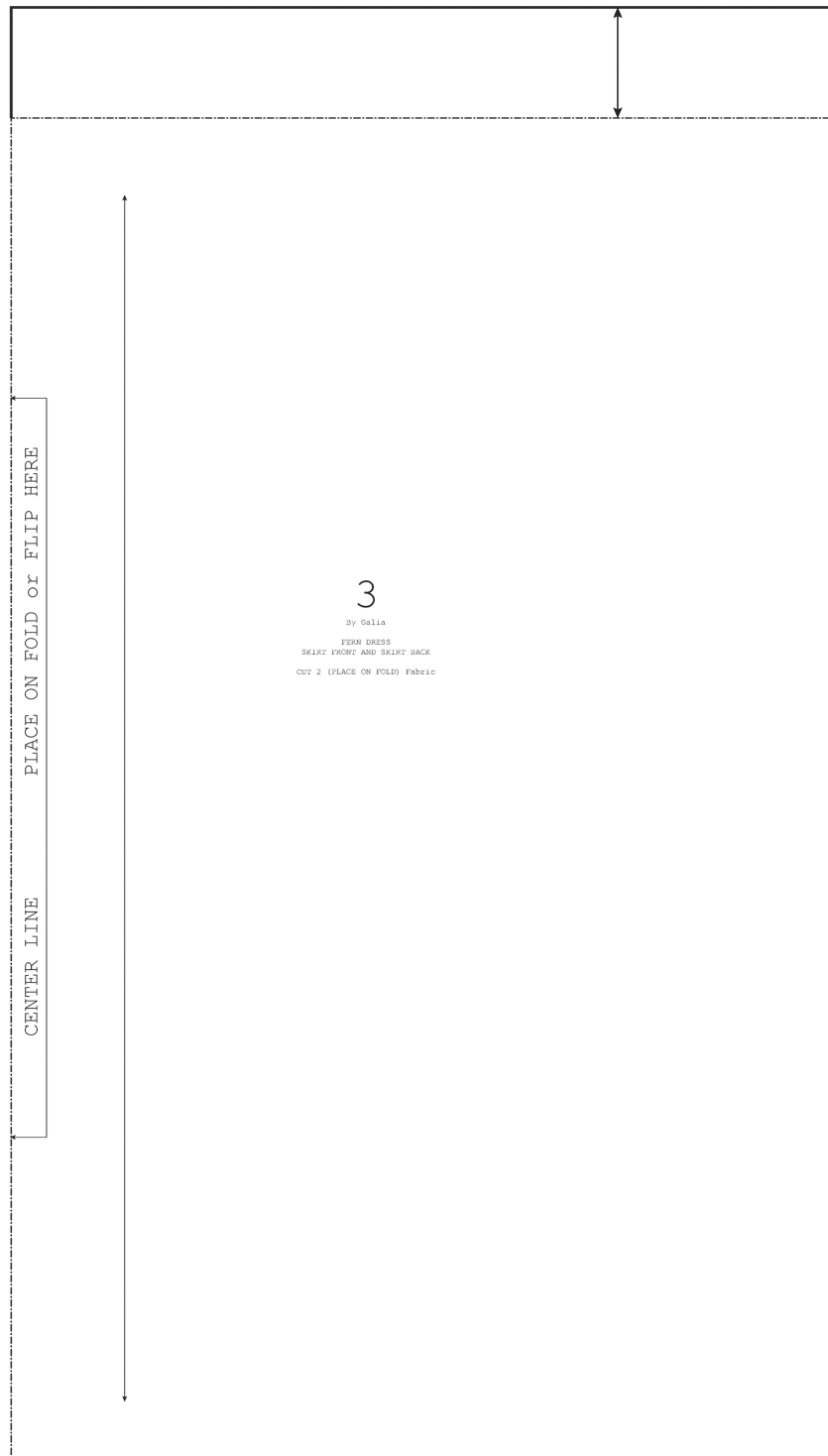
---

### 7. Work with Skirt Piece #3:

Mark the distance between the old waist seam and the new one (same as on the front and back bodice pieces), upwards.

Draw a line, parallel to the waist seam.

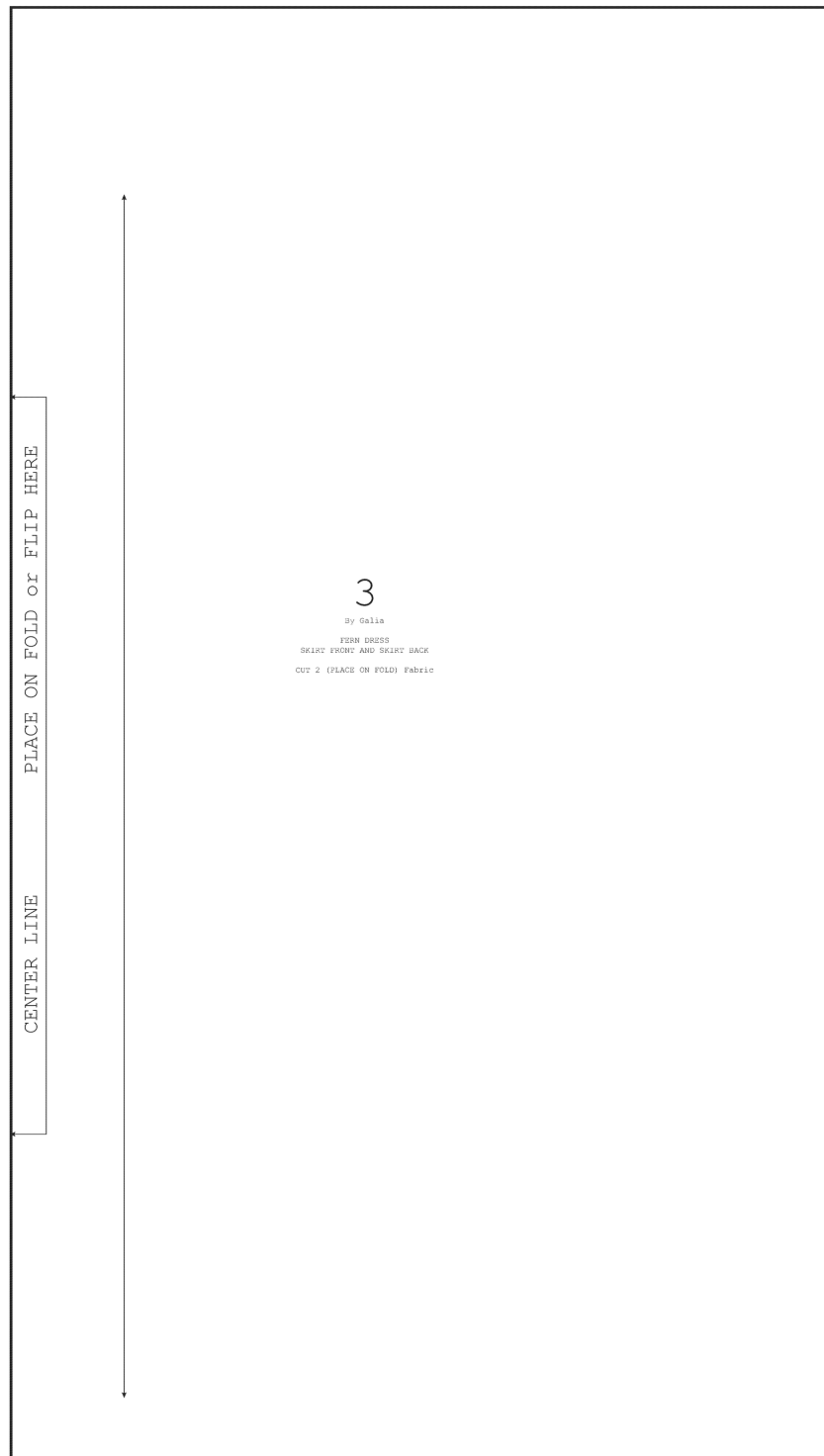
Prolong the side seam and center seam up to the new waist edge.



---

**8. Cut the adjusted pattern piece #3:**

Cut the pattern piece #3 with the new waist seam.



---

# Fern dress hack

## Shortened bodice

Now the pattern pieces of Fern dress with shortened bodice are ready to be cut from fabric. Use the original lay plans and sew the Fern dress with shifted waist seam in the same way as the original Fern dress.

Hope you enjoy learning how to make your perfect and unique garment!

It was a true honor and pleasure for me to prepare this tutorial for you! And I would be delighted to see your creations.

*Thank you!*



#bygaliapatterns  
#bgferndress