

BY GALIA

FERN DRESS HACK

Waist length with Front buttons and drawstrings

TUTORIAL

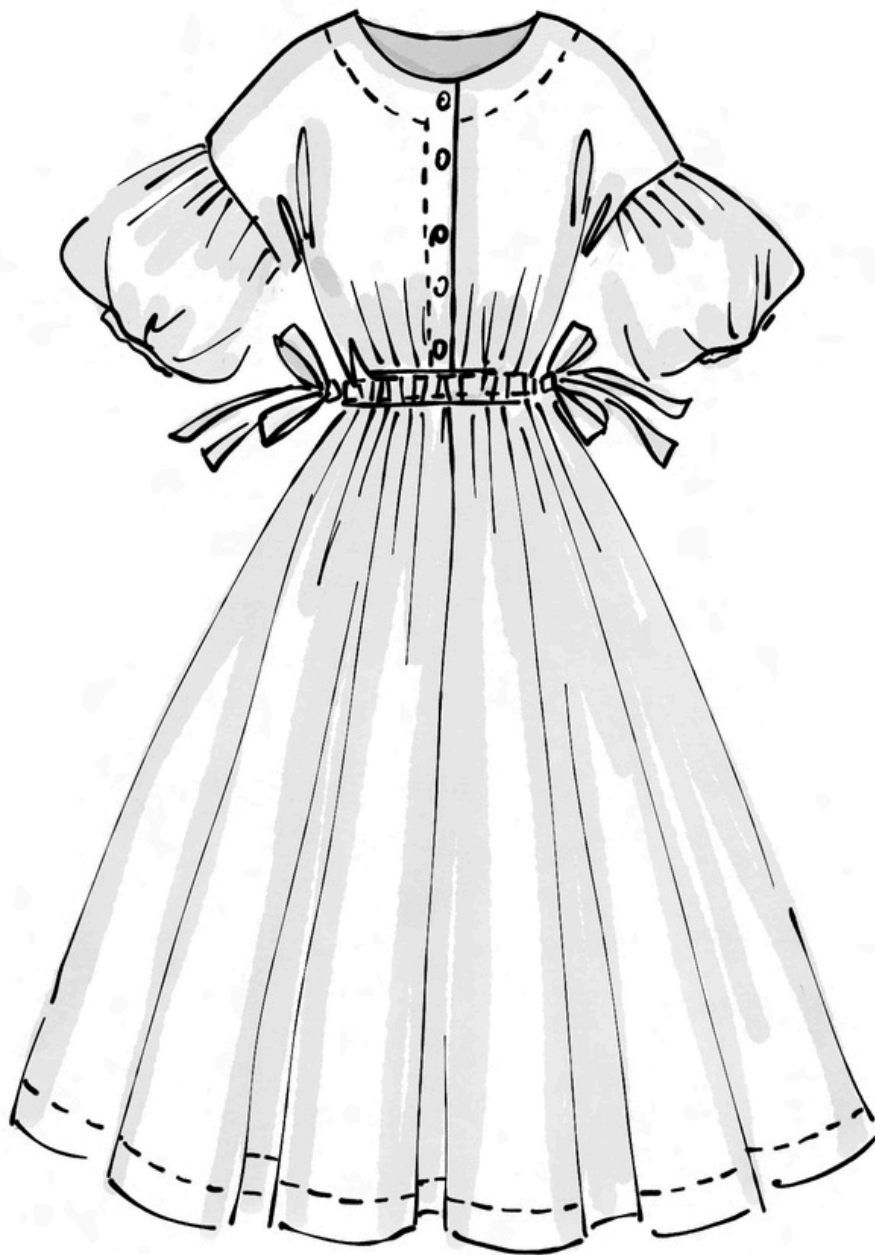


BYGALIAPATTERNS.ETSY.COM
BYGALIA.NET

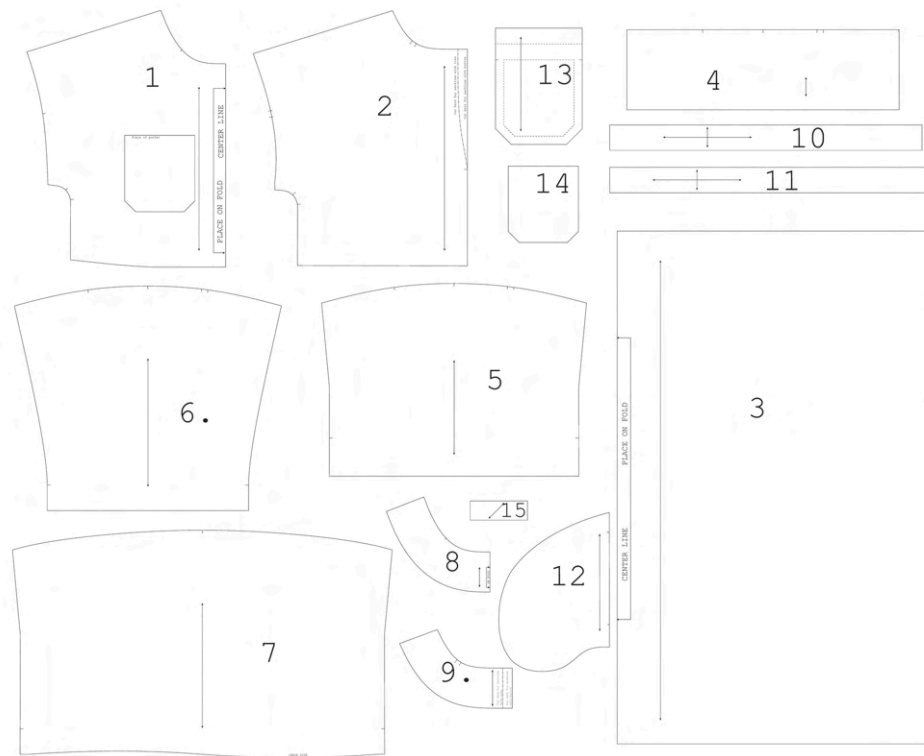
2025ByGalia.net
All rights reserved.
You may not copy or sell this pattern in any way.
For personal use only.

1. OVERVIEW

In this tutorial I'll guide you through drafting and sewing Fern dress with waist length bodice and variation with front buttons fastening and also waist drawstrings. These hacks are perfect for both beginners and experienced sewists.



PATTERN PIECES



1. Bodice front, cut 1 on fold fabric.
2. Bodice back, cut 2 (one pair), fabric.
3. Skirt Front and Skirt Back, cut 2 on fold fabric.
4. Cuffs, cut 2 (one pair) fabric.
5. Short sleeve with cuffs, cut 2 (one pair) fabric.
6. Three quarter straight sleeve, cut 2 (one pair) fabric.
7. Puffed Sleeve, cut 2 (one pair) fabric.
8. Facing Front, cut 1 on fold fabric and cut 1 on fold Fusible interfacing.
9. Facing Back, cut 2 (one pair) fabric and cut 2 (one pair) Fusible interfacing.
10. Waist ties, cut 4 (two pairs) fabric.
11. Neckline ties for back neckline with ties, cut 2 (one pair) fabric.
12. Inseam pockets, cut 4 (two pairs) fabric.
13. Chest pocket, cut 1 fabric.
14. TEMPLATE Chest pocket, cut 1 paper.
15. Loop for back neckline with button, cut 1 fabric.

YOU WILL NEED:

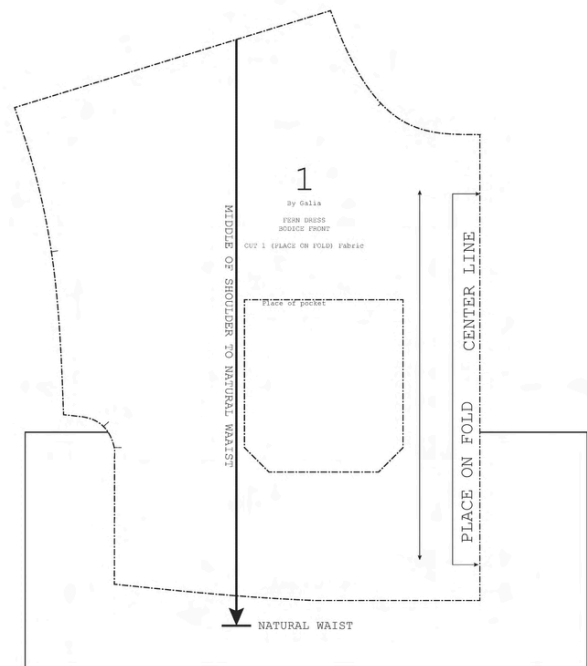
- Pattern pieces #1, #2 and #3
- Paper
- Pencil
- Ruler
- Tape
- Measuring tape
- Paper scissors
- Paper weights

2. HOW TO DRAFT THE FERN DRESS WITH WAIST LENGTH BODICE

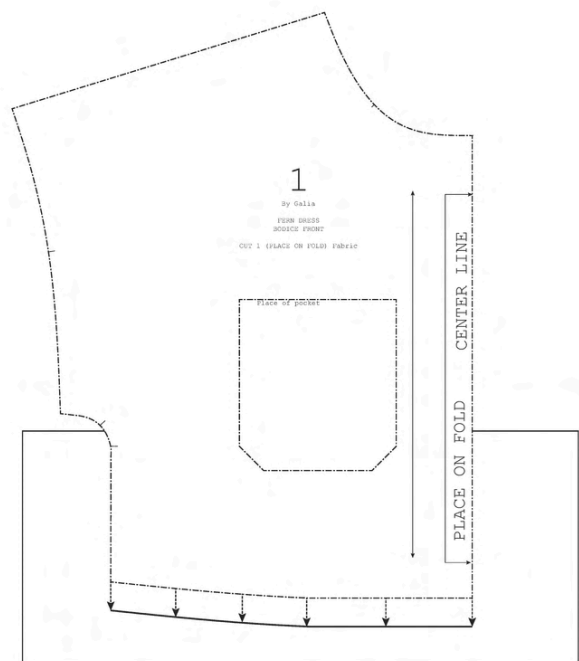
1. Work with Front Bodice Piece #1:

Measure on your body, Length from middle of your shoulder down to your natural waistline, vertically.

Lay the lower part of pattern piece #1, on a large piece of paper. Put some paper weights to fix the pattern piece and paper. Compare this measurement + 2.6 cm (1 in) with the corresponding length on your bodice pattern (from the shoulder seam to the waist edge).

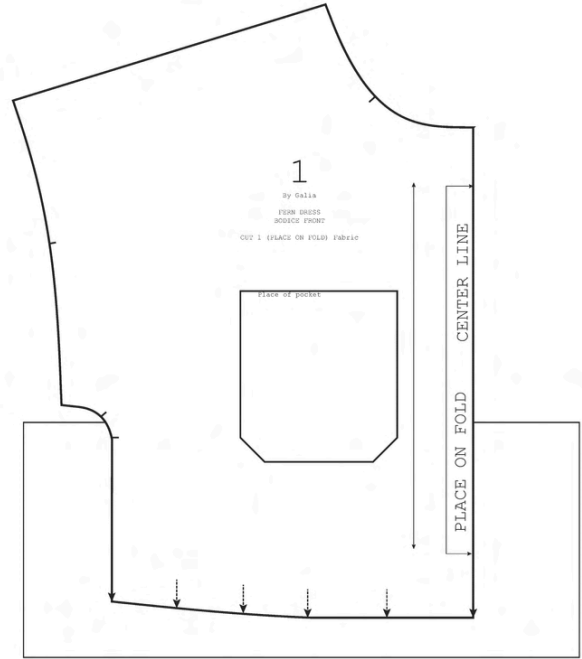


- **2. Work with Front Bodice Piece #1:**
- Note how much longer your body measurement is.
- On your pattern, measure this difference from the waist edge and draw a line parallel to it.



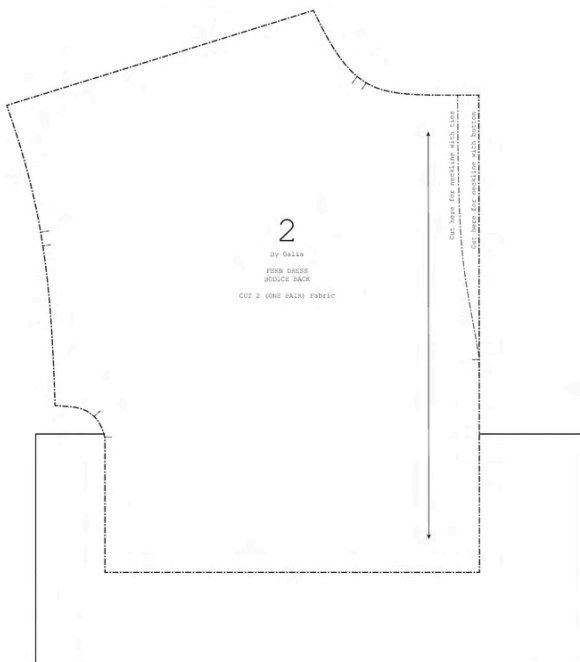
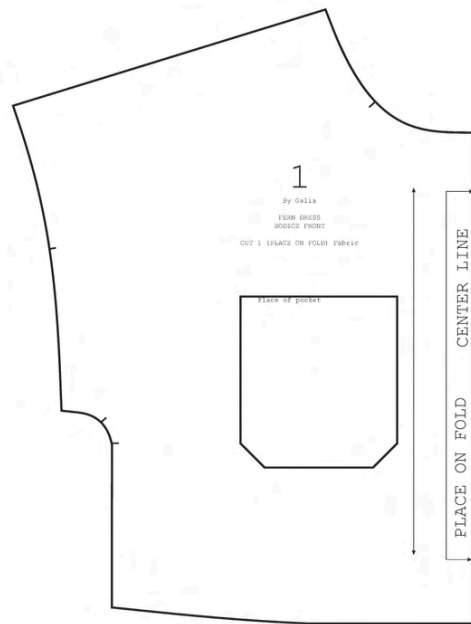
3. Work with Front Bodice Piece #1:

Prolong the side seam and center front seam down to the new waist edge.



4. Cut the adjusted pattern piece #1:

Fix the pattern piece on the paper piece, using a tape. Cut the pattern piece #1 with the new level of waistline.



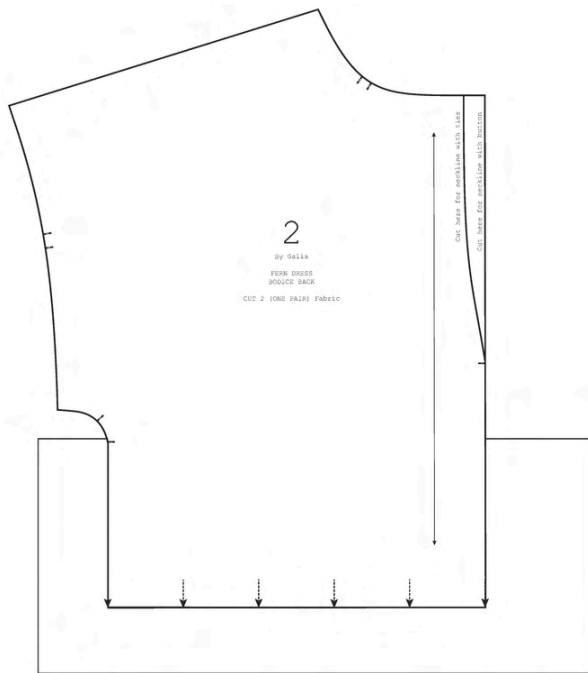
5. Work with Back Bodice Piece #2:

Lay the lower part of pattern piece #2, on a large piece of paper. Put some paper weights to fix the pattern piece and paper.



6. Work with Back Bodice Piece #2:

On your pattern, measure the same distance as on Front Bodice piece #1 from the waist edge, downwards, and draw a horizontal line parallel to it.

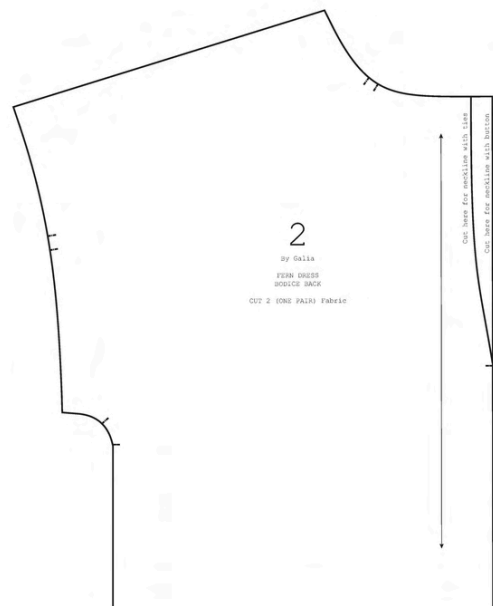


7. Work with Back Bodice Piece #2:

Prolong the side seam and center back seam down to the new waist edge.

8. Cut the adjusted pattern piece #2:

Fix the pattern piece on the paper piece, using a tape. Cut the pattern piece #2 with the new level of waistline.



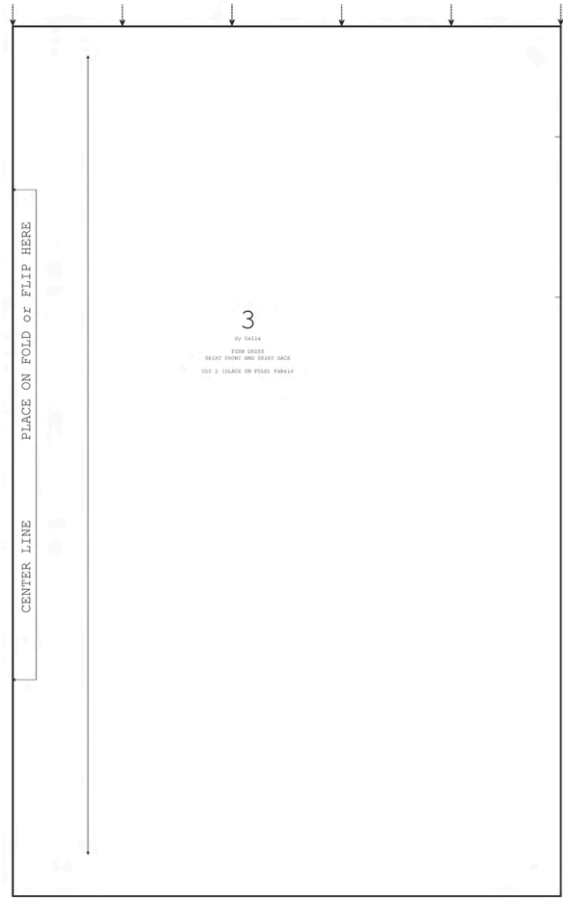
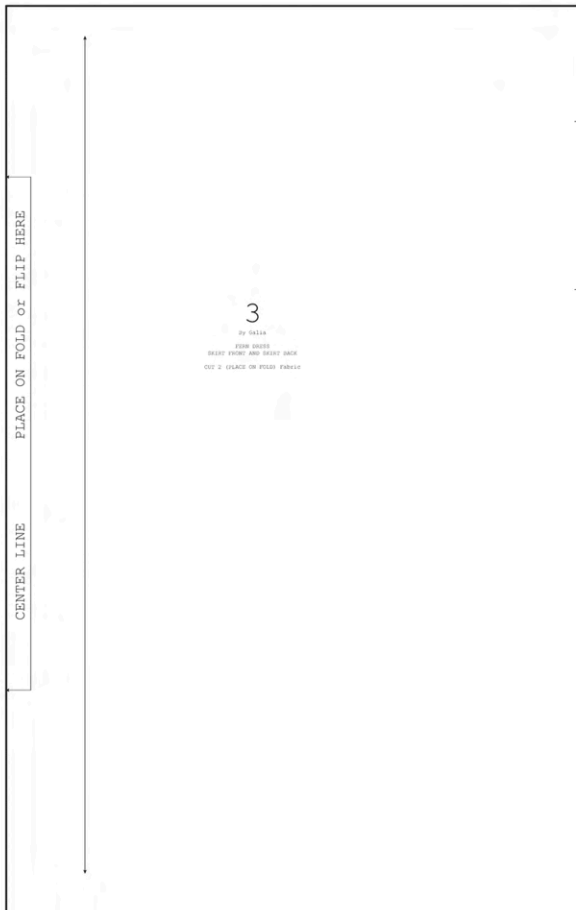
9. Work with Skirt Piece #3.



10. Work with Skirt Piece #3:

On your pattern, measure the same distance as on Bodice pieces #1 and #2 from the waist edge, downwards, and draw a horizontal line parallel to it.

11. Cut the adjusted pattern piece #3:
Cut the pattern piece #3 with the new waistline.

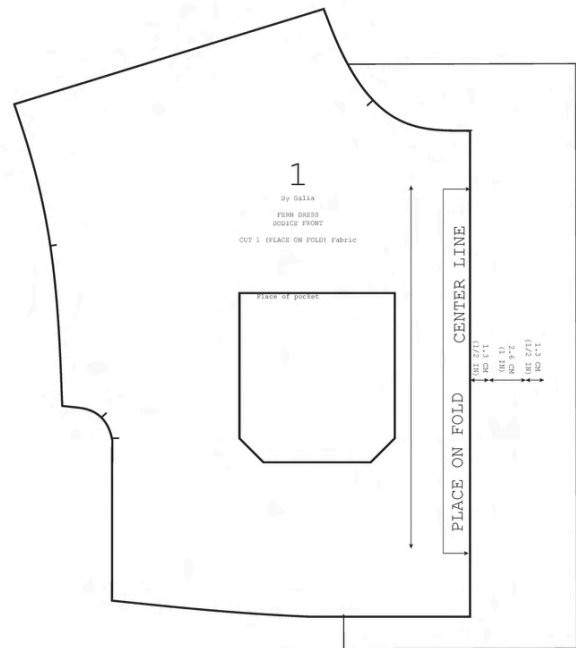


3. HOW TO DRAFT THE FERN DRESS WITH FRONT BUTTONS

1. Work with Front Bodice Piece #1, adjusted on page #7 :

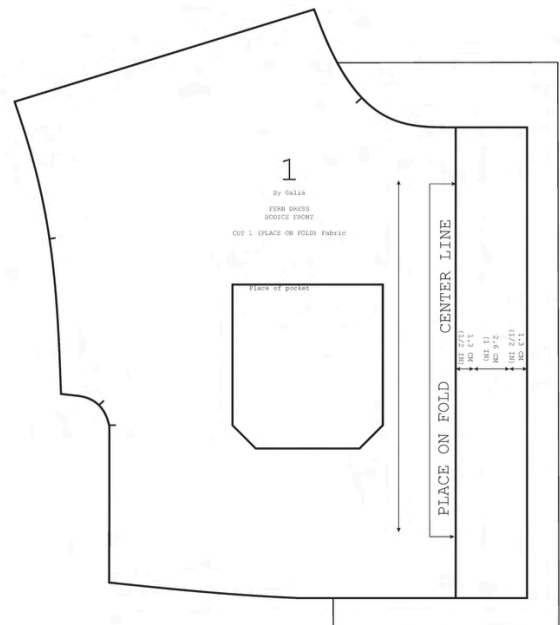
Lay the center fold line of pattern piece #1, on a large piece of paper. Put some paper weights to fix the pattern piece and paper. Measure and draw outward from the center fold line :

- 1.3 cm (1/2 in) for overlapping
- 2.6 cm (1 in) for button placket
- 1.3 cm (1/2 in) for seam allowance of button placket



2. Work with adjusted Front Bodice Piece #1:

Draw a vertical line parallel to the last new point. Prolong also the neckline and waistline until they meet the new center front line.



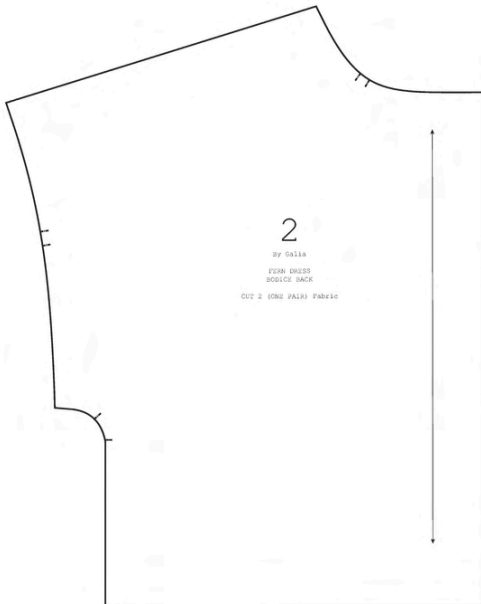
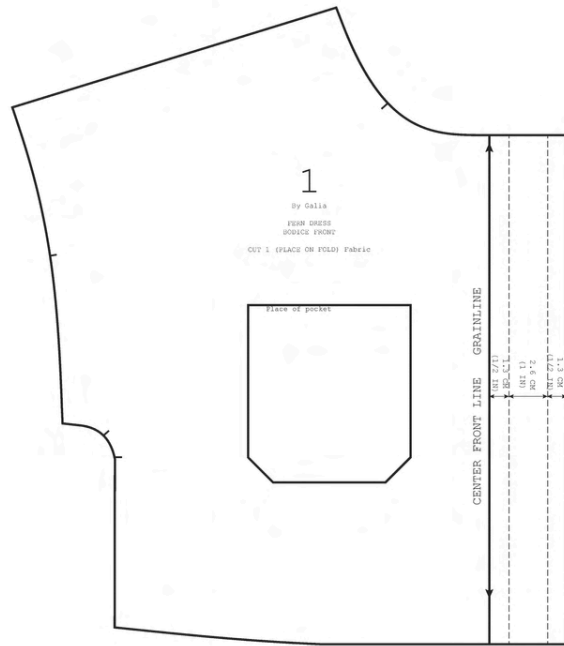
3. Cut the adjusted pattern piece #1:

Fix the pattern piece on the paper, using a tape. Cut the pattern piece #1 with the new center front line.

The older center fold line stays center front line.

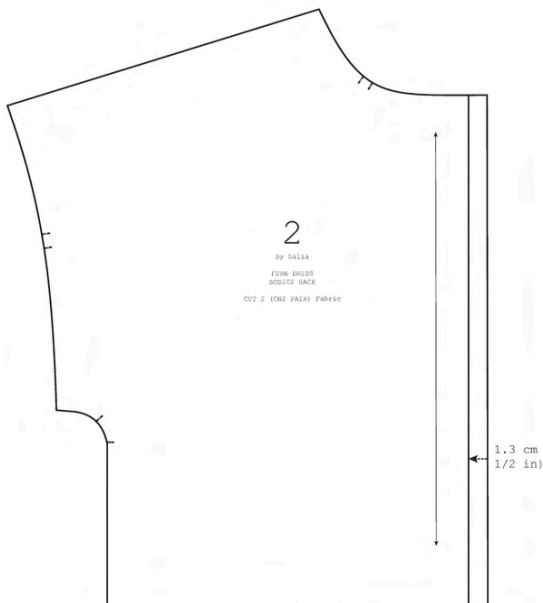
Mark with dashed lines the button placket.

You will need to cut two pieces (one pair) from the fabric.



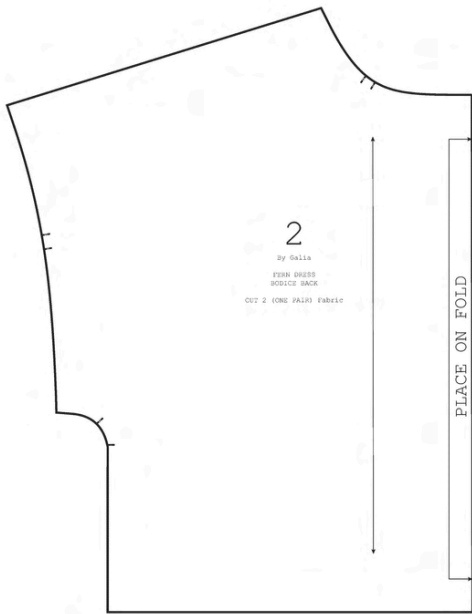
4. Work with pattern piece #2, adjusted on page #11:

Trace the outer edges and notches of adjusted Bodice Back piece #2.



5. Work with adjusted pattern piece #2:

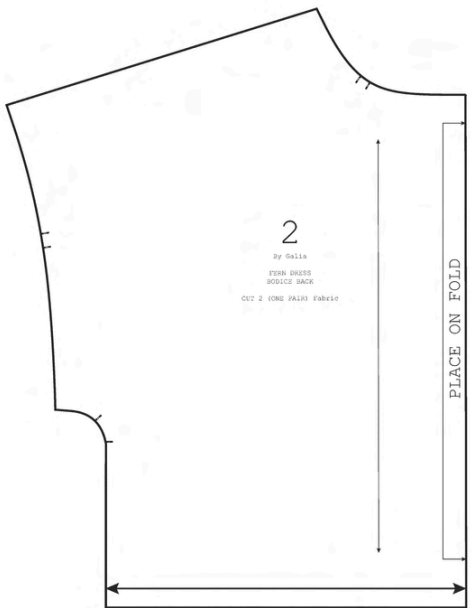
Measure 1.3 cm (1/2 in) from center back seam, inward. From there, draw a vertical line, parallel to the center back seam. This will be the new center back line.



6. Work with adjusted pattern piece #2:

Mark the new center back line as "on fold".

You will need to cut one piece, placed on fold, from the fabric.



7. Work with adjusted pattern piece #2:

Measure the distance from side seam to center back line. Subtract 4.3 cm (1 3/4 in). This is the half length of channels for drawstrings.

8. Draw the channel pattern piece:

Draw a rectangle 4 cm (1 1/2 in) width and (distance from side seam to center back seam - 4.3 cm) x 2 length. The grainline is perpendicular to the length. You will need to cut two pieces (one pair) from the fabric.



(MEASUREMENT OF BACK BODICE FROM SIDE SEAM TO CENTER BACK SEAM - 4.3 CM) X 2 = CHANNELS LENGTH (1 3/4 IN)

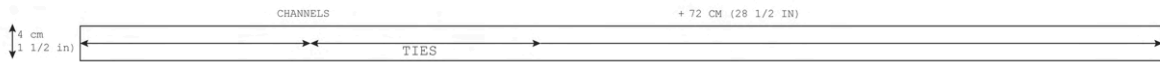
9. Draw the ties:

Trace the channel pattern piece and prolong the length 72cm (28 1/2 in).

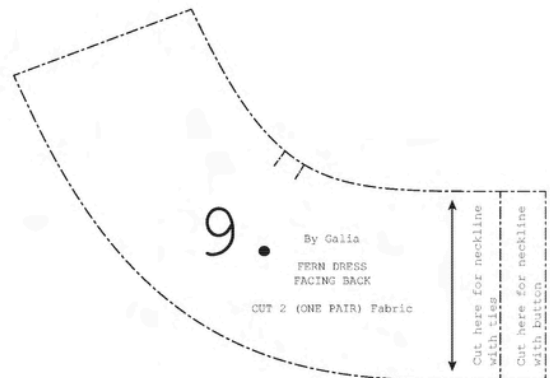


10. Draw the ties:

Trace the ties pattern piece. You will need to cut two pieces from the fabric (main fabric or an other one). The grainline can be parallel or perpendicular to the length. You can also use a bias tape for the drawstrings or some ready pieces of string, cord or lace).

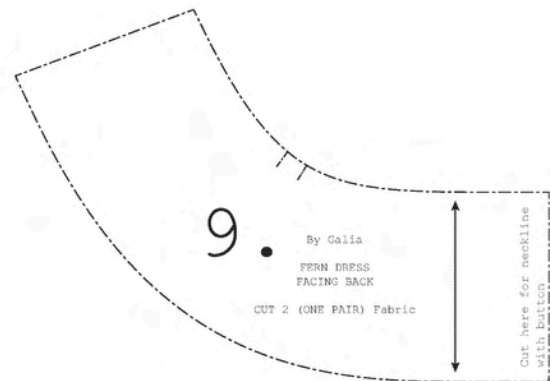


11. Work with Facing Back Piece #9



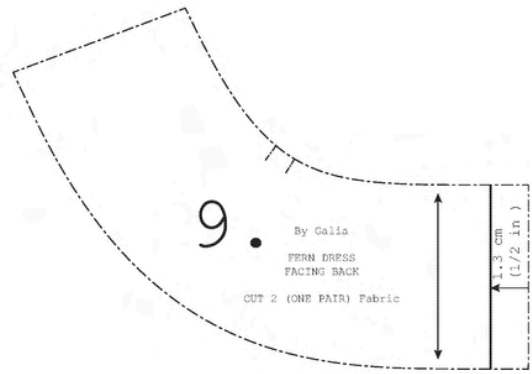
12. Work with Facing Back Piece #9:

Trace the outer edges and notches of pattern piece #9



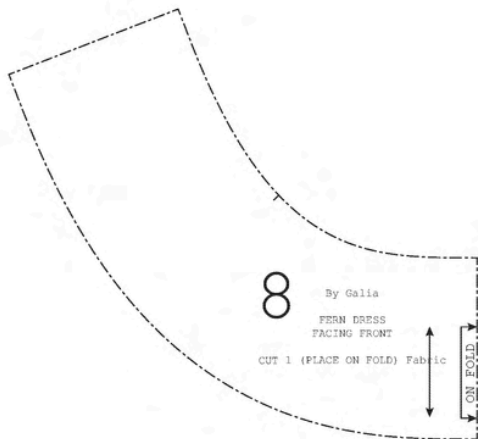
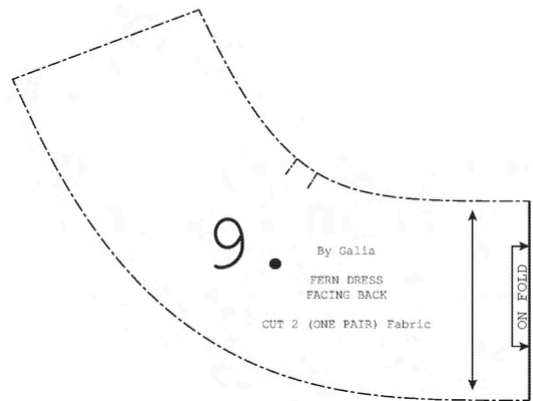
13. Work with Facing Back Piece #9:

Measure and draw inward from the center back line 1.3 cm (1/2 in). This will be the new center back line.



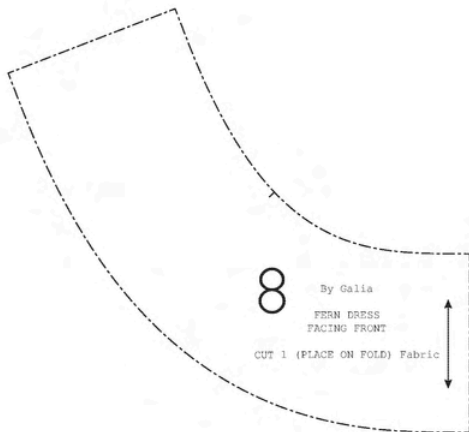
14. Work with Facing Back Piece #9:

Cut the pattern piece #9 with the new center back line. Mark this line as "on fold". You will need to cut one piece, placed on fold, from the fabric.



11. Work with Facing Front Piece #8:

Trace the outer edges and notch of pattern piece #8.



15. Work with Facing Front Piece #8:

Don't transfer the marking "On Fold". You will need to cut two pieces (one pair) from the fabric.

4. HOW TO SEW THE FERN DRESS WITH FRONT BUTTONS

Seam allowances 1.3 cm (1/2 inch) are included in the pattern.
(on some sewing machines 1/2 inch is marked as 4/8 inch, which is the same), except otherwise stated.



1. Stabilizing the bodice with fusible tape:

On the wrong side of Front Bodice and Back Bodice pieces, iron 1 cm (3/8 in) wide strips of non-stretch interfacing tape or Forming tape interfacing along the neckline, to prevent the edges from stretching. Place the strips 0.5 cm (1/4 in) inwards from the raw edges. If you use non-stretch tape interfacing, clip the inner edge of the tape along the curved lines so that it lays flat.

On wrong side of Bodice Front pieces, mark the place of the Chest pocket, if present. Transfer the markings on the face of the fabric by hand baste stitch.



2. Preparing the button plackets:

Finish the raw edge of central front line with an overlock or zigzag, if the fabric is easily fraying. Turn in 1.3 cm (1/2 in) and press the edge. Turn in another 2.6 cm (1 in) and press.



3. Assembling the Facing:

With right sides together, pin and stitch the Front Facing pieces to Back Facing at shoulder seams. Press towards the Front facing.

Trim the free corners of the shoulder seams.

Sew 1 cm (3/8 in) baste stitch from the longer curved edge of Facing. Make notches on this edge every 1 cm (3/8 in).



Finish the edge with an overlock or zigzag. Turn in the seam allowance along the baste stitch and press.



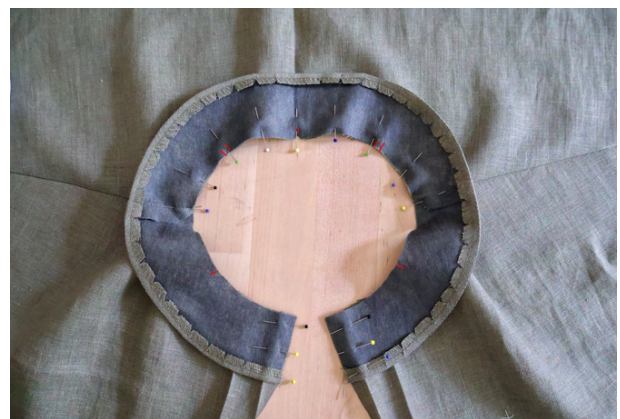
4. Assembling the bodice pieces:

With right sides together, pin and stitch the Front Bodice to Back Bodice at shoulder seams. Finish the shoulder seams together with an overlock or zigzag and press towards the back.



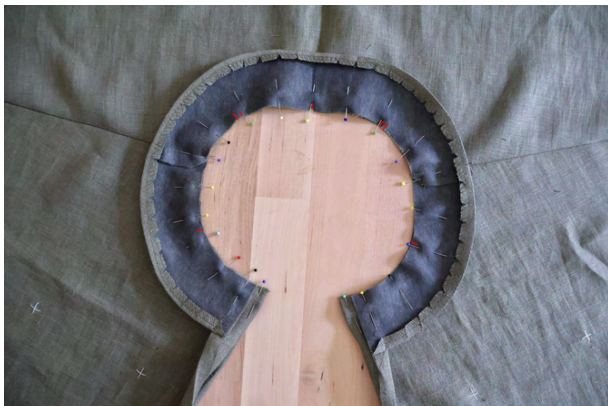
5. Attaching the Back Facing to the bodice:

With right sides together, pin and stitch the Back Facing to Back Bodice at the neckline, matching notches and shoulder seams. At front vertical lines, pin the facing edges to the unfolded button plackets.





Sew the front vertical seams. Trim the free corners of the finished seam allowance.



6. Attaching the Front Facing to the bodice:

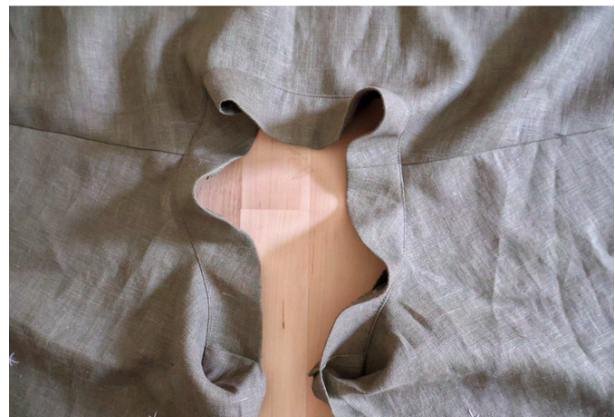
With right sides together, pin and stitch the Front Facing to Front Bodice at the neckline, matching notches (turn out the button plackets at the second fold line). Sew the neckline seam.

Grade the seam allowance of the Facing - trim it to 1 cm (3/8 in).

Cut small clips into the curved seam allowance to allow the fabric to stretch once the Facing is turned right side out.
Finish the seam with an overlock or zigzag, spreading the seam allowances.



Press the seam allowance towards the Facing and understitch. (The stitch is on the facing).





7. Stitch the Facing and Front button plackets:

Turn the Facing to the inside of Bodice. Pin the Facing to the Bodice. Pin also the button plackets. (You can replace the pins with hand baste stitch, as well).

Sew the facing and plackets with a stitch close to the folded edges (beginning with lower edge of one button placket, continuing upwards with, then sewing the Facing, and ending downwards to the end of other placket).

Press well the Facing and plackets.



8. Sewing buttonholes:

The buttonholes are placed vertically on the right button placket, in the middle between the edge and stitch.

The center of the lowest buttonhole begins at least 3.5 cm (1 3/8 in) above the waistline edge. The center of the top buttonhole is 1.3 cm (1/2 in) from the neckline. Find the centers of the remaining buttonholes - they are evenly spaced.

Draw the length of each buttonhole - the top buttonhole begins 0.5 cm (1/4 in) above its center.

The remaining buttonholes have center in the middle of their length.

Overlap the button plackets 2.6 cm (1 in) and fix them with baste stitch..



9. Preparing the sleeve hem:

Prepare and attach the sleeves depending on the chosen variation (see the steps in the Fern dress Booklet Sewing Instructions).



10. Sew the buttons:

Mark the centers of the buttons - transfer the buttonholes centers on the left button placket. Sew the buttons securely, in the middle of button placket.

11. Proceed according the original instructions in Fern Dress Booklet Sewing Instructions.



12. Sewing the channels:

Finish all edges of channels with an overlock or zigzag stitch. Turn in the short edges 1.3cm (1/2 in).



Turn in the longer edges 1 cm (3/8 in), so they meet at the middle of wrong side, lengthwise.



Find the middle of each channel, by folding it widthwise. Find the middle of front and back waist seam in the same way. Attach the channels to the front and back waistline, with edgestitches, lengthwise (the lower fold of channel is placed 2mm (1/16 in) below the waist seam).



13. Sewing the drawstrings:

To create the drawstrings, first press them in half, lengthwise, with wrong sides together. Turn in the longer edges 1 cm (3/8 in), so they meet at the middle of wrong side, lengthwise. (Or you can use a bias tape maker).

Fold again the drawstrings in half, lengthwise.

Unfold the right side and turn in the upper short edge. Trim the corners if the fabric is thick. Fold again the right side. Insert the seam allowance of the right side between left side and its seam allowance.



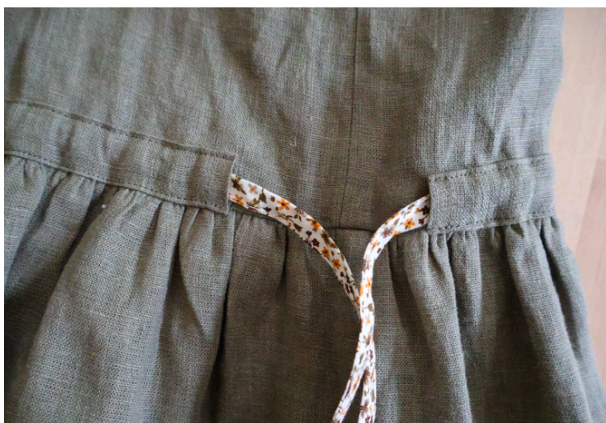
Pin precisely the drawstrings, you can baste them, as well. Sew the drawstrings with an edgestitch on the folded edges, widthwise and lengthwise.



14. Feed the drawstrings:

Attach a safety pin to one end of the drawstring and feed it through the channel

Fold again the drawstrings in half, lengthwise.



Fern dress hack

Waist length with Front buttons and drawstrings

Now your Fern dress is ready!
Hope you enjoy learning how to make your perfect and unique garment!
It was a true honor and pleasure for me to prepare this tutorial for you! And I would be delighted to see your creations.

Thank you!



#bygaliapatterns
#bgferndress

