

BY GALIA

AVRIL DRESS

How to add lining

TUTORIAL

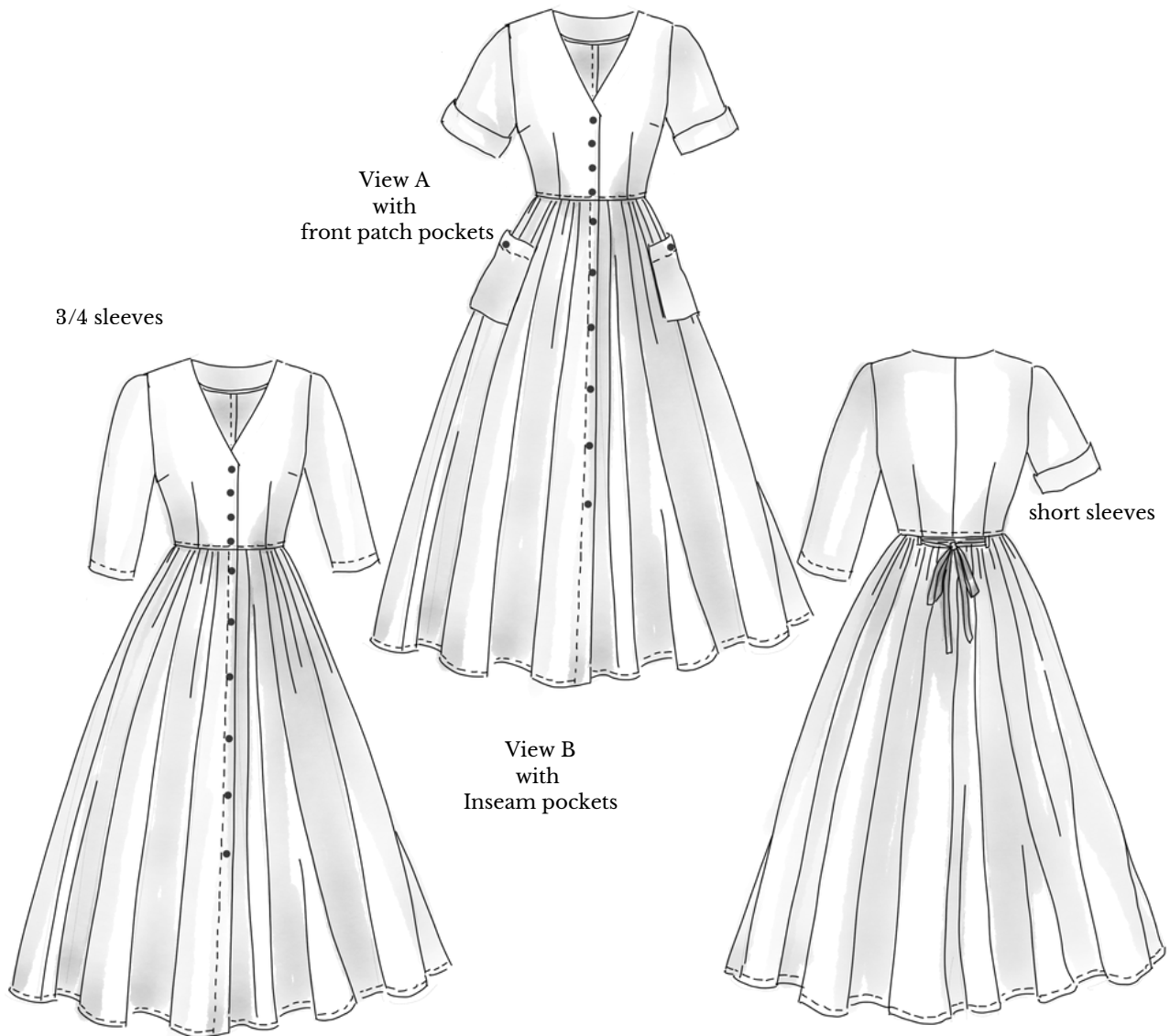


BYGALIAPATTERNS.ETSY.COM
BYGALIA.NET

2025ByGalia.net
All rights reserved.
You may not copy or sell this pattern in any way.
For personal use only.

1.OVERVIEW

In this tutorial I'll guide you through drafting and sewing Avril dress with lining. it's perfect for very thin or transparent fabrics. Also great when the main fabric is fine wool. This technique is for intermediate level sewists.

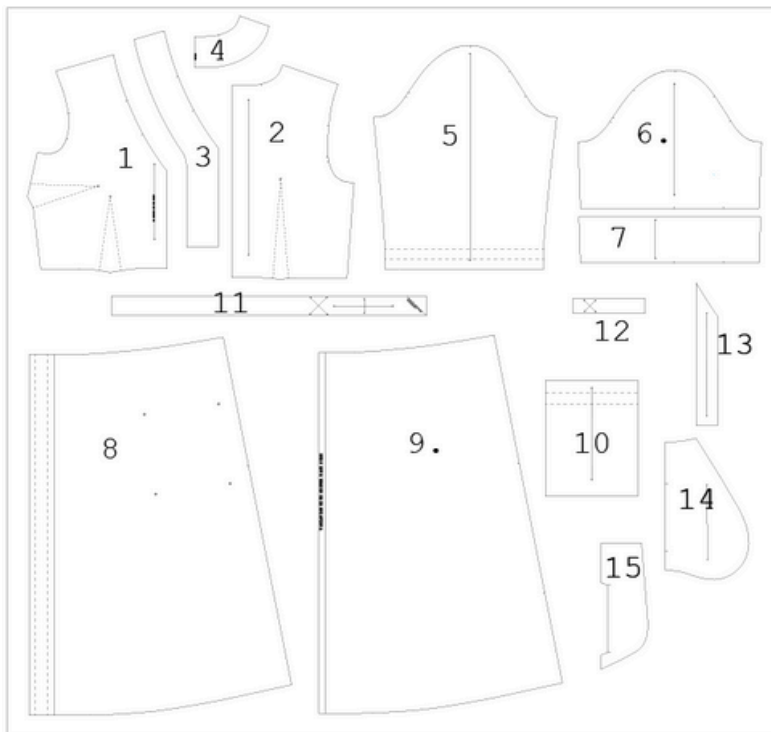


The Avril dress features beautiful classic bodice with V-neckline, two variations of sleeves - wide straight three-quarter sleeves and short ones with option for folded cuffs and elegant feminine A-line skirt with front patch pockets or Inseam pockets.

The dress is fastening with buttons and have a removable tie at the back waistline for adjusting its width.

Choose Light-mid weight soft linen, light-mid cotton (plain weave, lawn, chambray, poplin), Linen or cotton blends, viscose, fine wool.

PATTERN PIECES



- 1. Bodice front**, cut 2 fabric.
- 2. Bodice back**, cut 2 fabric.
- 3. Front facing**, cut 2 fabric and cut 2 fusible interfacing.
- 4. Back facing**, cut 1 on fold fabric and cut 1 on fold fusible interfacing.
- 5. Three-quarter sleeve**, cut 2 fabric.
- 6. Short sleeve**, cut 2 fabric.
- 7. Sleeve facing**, cut 2 fabric.
- 8. Front skirt**, cut 2 fabric.
- 9. Back skirt**, cut 1 on Fold fabric, or cut 2 fabric (depending on the fabric width and the the layout.)
- 10. Front Patch pockets**, cut 2 fabric.
- 11. Back tie**, cut 2 fabric (after cutting the two parts of the tie, lay each of them with the wrong side facing up. Trim the right short side of each piece along the "Cutting line for assembling the tie pieces")
- 12. Back loops**, cut 1 fabric.
- 13. Fusible interfacing Bodice front line**, cut 2 fusible interfacing fabric.
- 14. Inseam pocket**, cut 4 (two pairs) fabric.
- 15. TEMPLATE place of inseam pockets**, paper.

YOU WILL NEED

- The Avril dress sewing pattern
- Main Fabric (see the yardage chart in the Avril dress Booklet)
- Lining fabric (almost the same yardage)
- Lightweight fusible interfacing (see the yardage)
- Fusible seam tape
- Thread
- Sewing machine with straight stitch and Overlocker (Serger) or any other machine with overedge stitch
- Tailor's chalk
- Ruler
- Measuring tape
- Fabric Scissors
- Pins

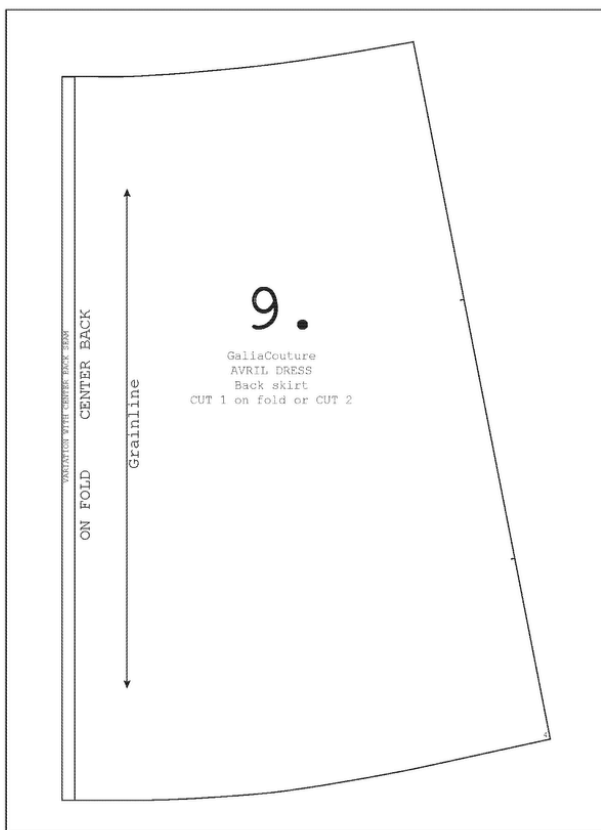
2. HOW TO DRAFT LINING FOR AVRIL DRESS

1. You will need paper pattern pieces:

Bodice Front #1; Bodice Back #2; Front Facing #3; Back facing #4; Front Skirt #8;

Back Skirt #9. These pattern pieces will be used as **Outer pieces.** The new drafted pieces will be **Lining (inner) ones.**

SKIRT



2. Work with Piece #9:

Lay the pattern piece #9 on a large piece of paper. Put some paper weights to fix the pattern piece and paper.

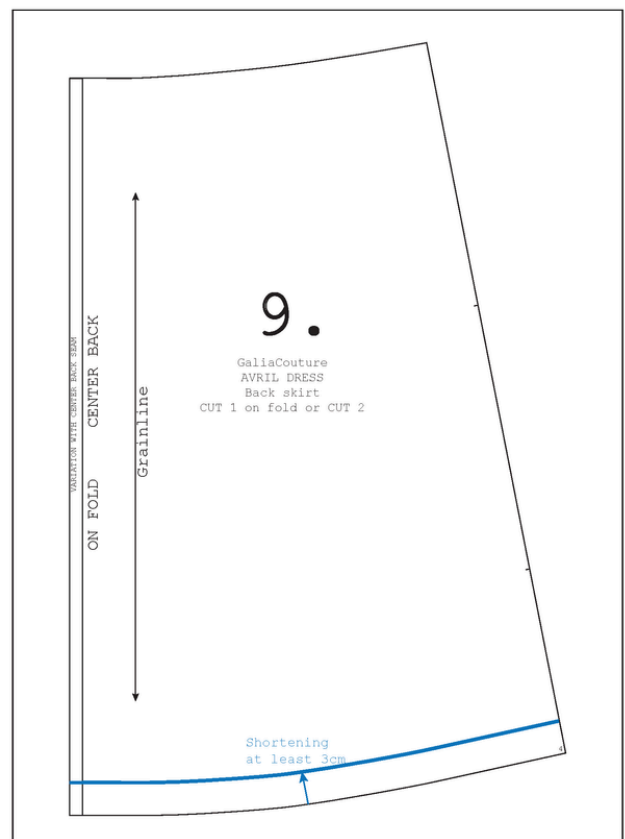
Outline the Skirt Back, draw the notches.

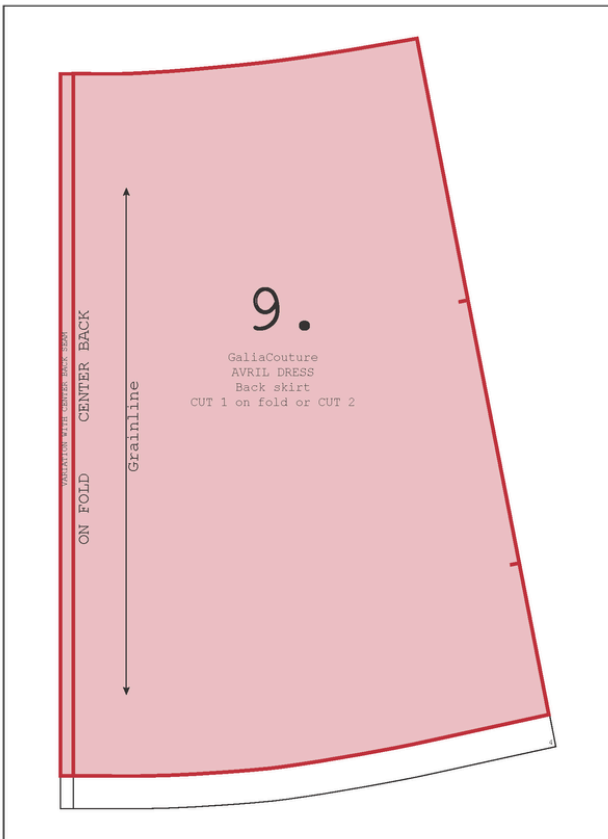
Remove piece #9.

3. Draw new hem line:

Draw a line, parallel to the hem line at least 3 cm inward. (The Lining will be 3 cm shorter than the main skirt. You can make it shorter)

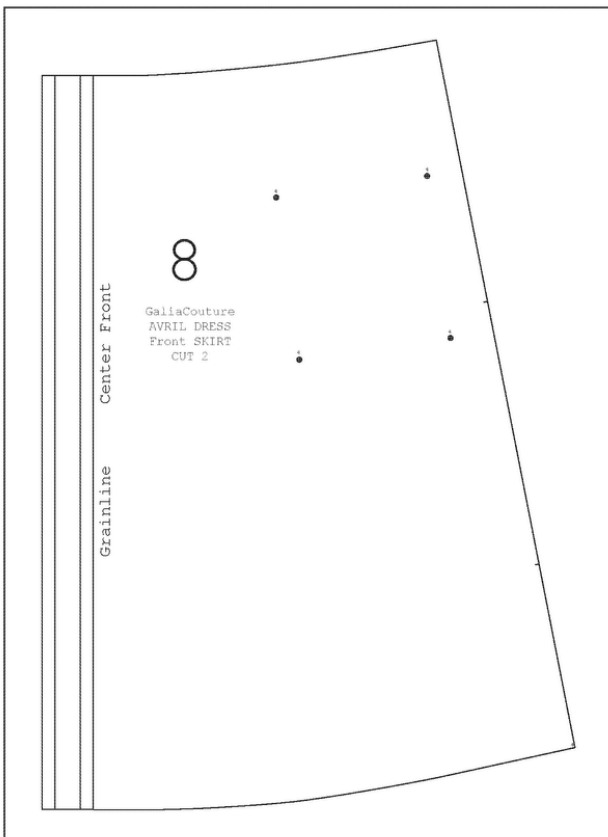
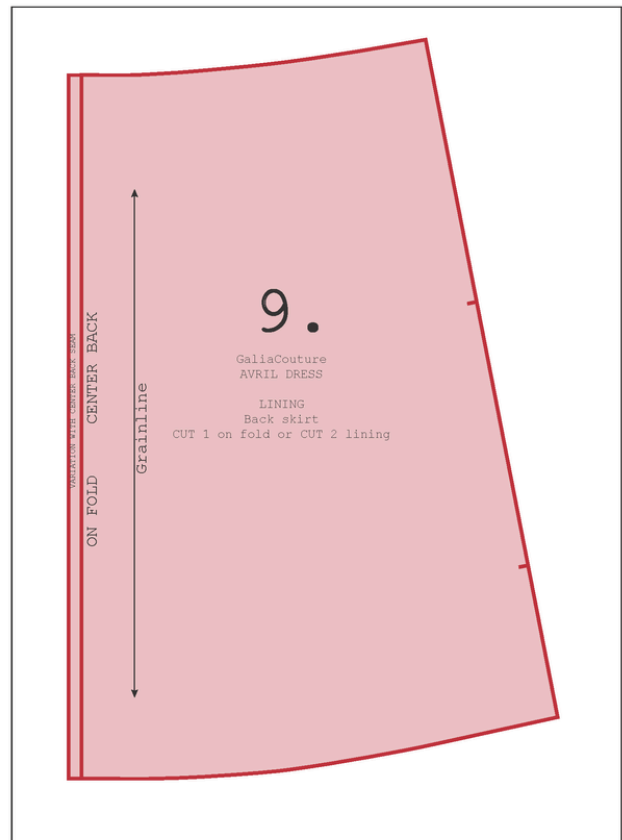
This is the Lining hem line.





4. Cut the Lining Skirt Back:

Outline the Lining Skirt Back piece - the new hem line and the other lines (Center Back line, waistline and side seam are the same). Cut the Lining Skirt Back.



5. Work with Piece #8:

Lay the pattern piece #8 on a large piece of paper. Put some paper weights to fix the pattern piece and paper.

Outline the Skirt Front, draw the notches. Trace the grainline. Remove piece #8.

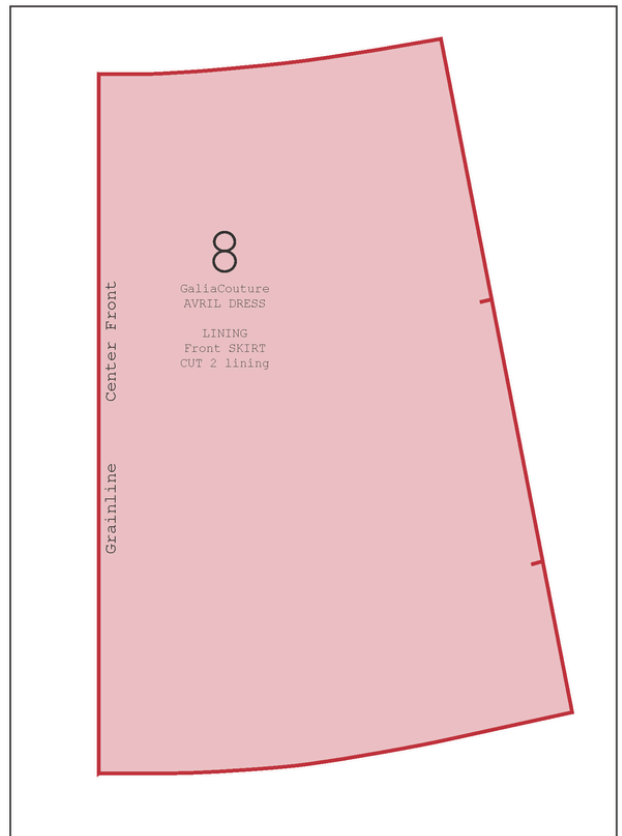
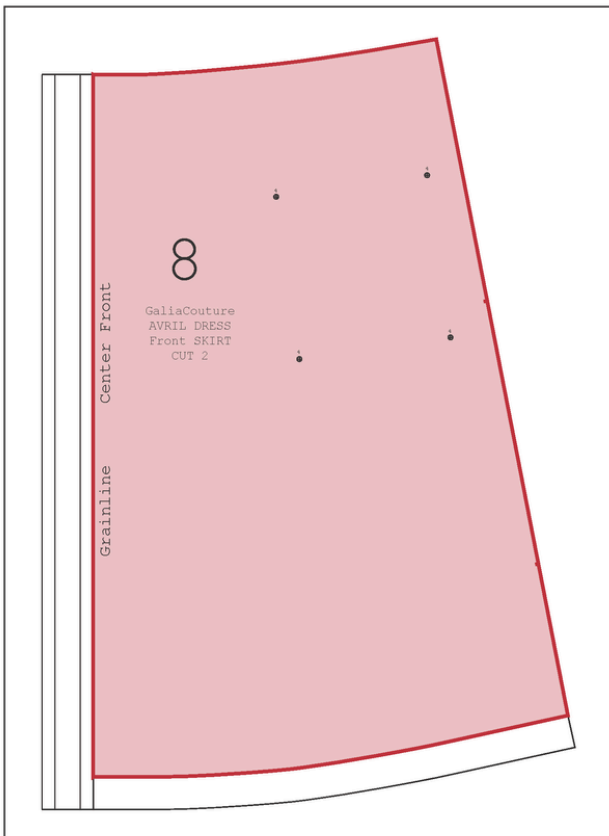
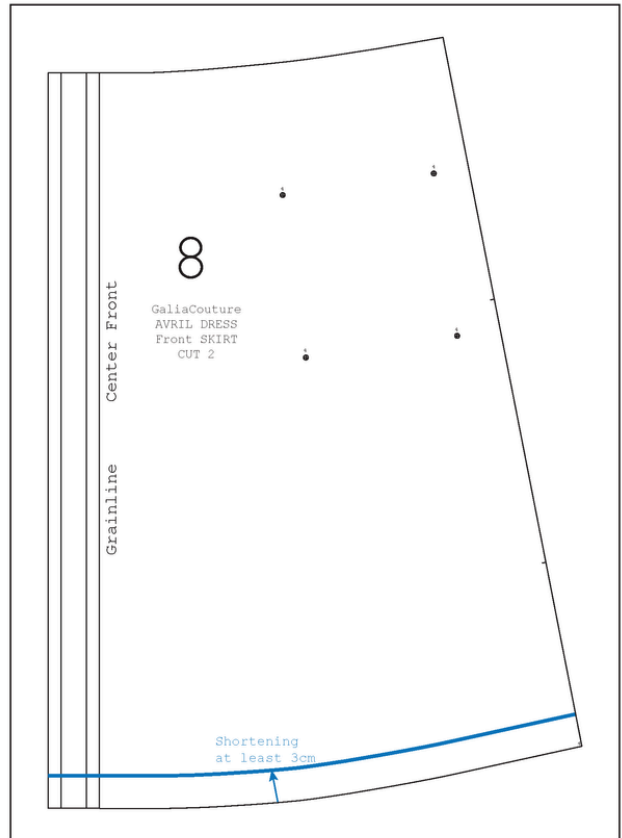
6. Draw new hem line:

Draw a line, parallel to the hem line at least 3 cm inward. (the same distance as on the Skirt Back hem)

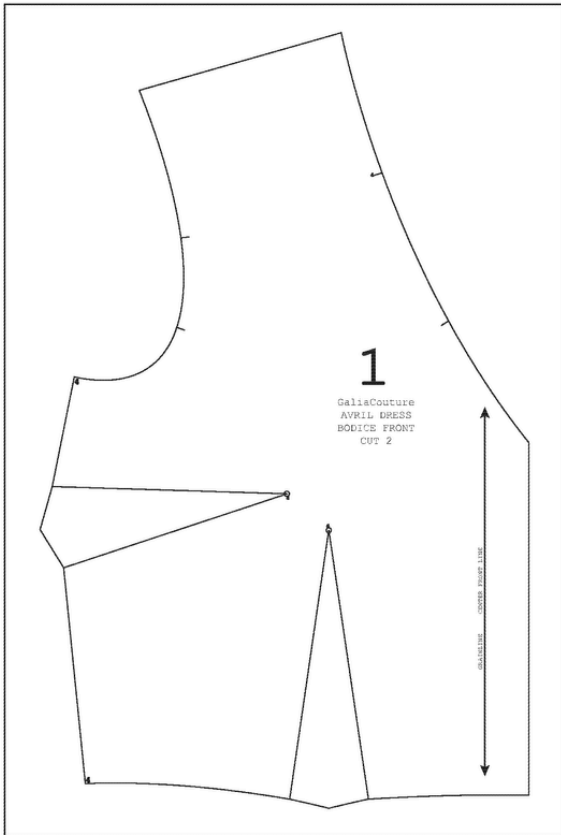
This is the Lining hem line.

7. Cut the Lining Skirt Front:

Outline the Lining Skirt Front piece - the new hem line; the new Center Front line is matching with the Grainline of Outer piece. The other lines (waistline and side seam are the same).



BODICE FRONT



1. Work with Piece #1:

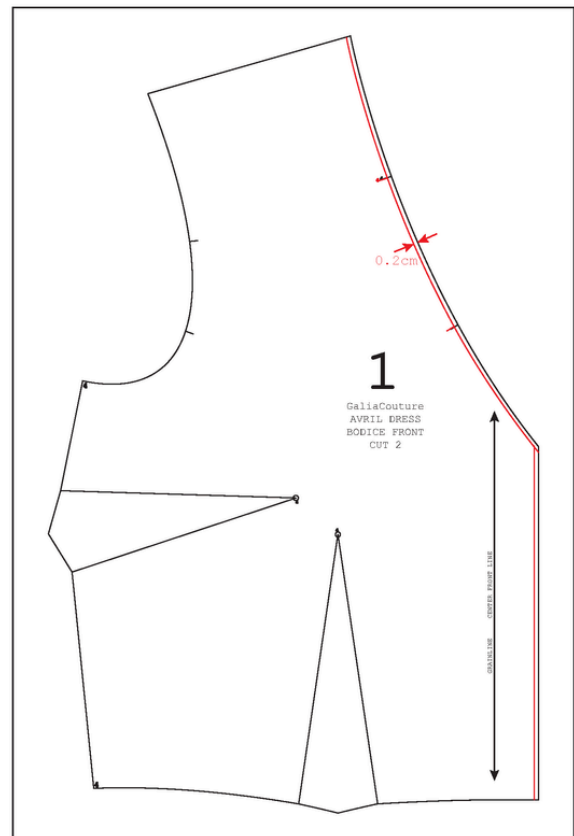
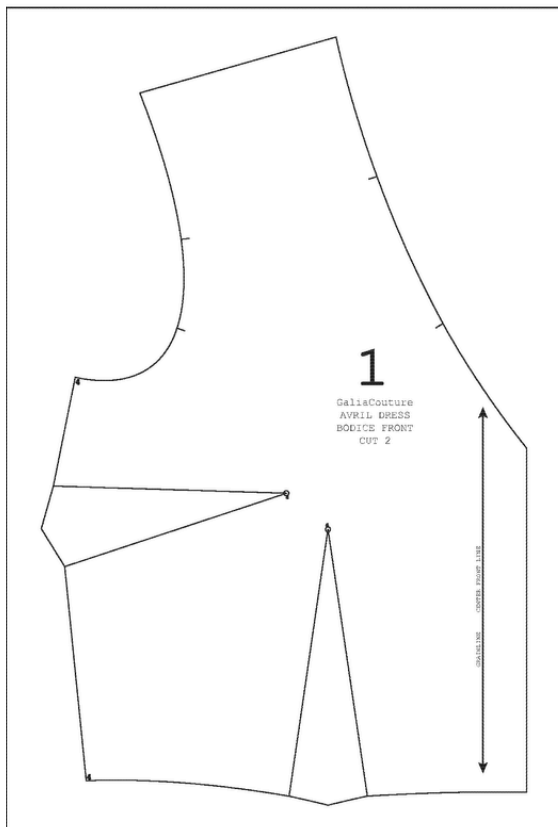
Lay the pattern piece #1 on a large piece of paper. Put some paper weights to fix the pattern piece and paper.

Outline the Bodice Front, draw the darts and notches. Remove Lining piece #1.

2. Draw new Front neck line and Center Front line:

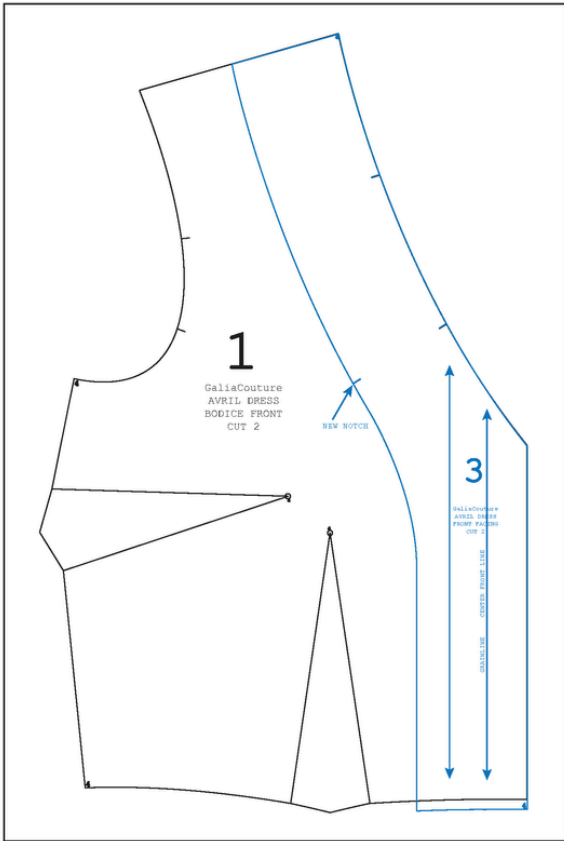
Draw a line, parallel to the Center Front line 0.2 cm inward.

Draw a line, parallel to the front neckline, 0.2 cm inward. These are the new Front neckline and new Center Front line.



3. Outline the Bodice Front:

Outline the Lining Bodice Front piece #1 - the new neck and center front lines; The other lines (waistline, shoulder, armhole and side seam are the same).

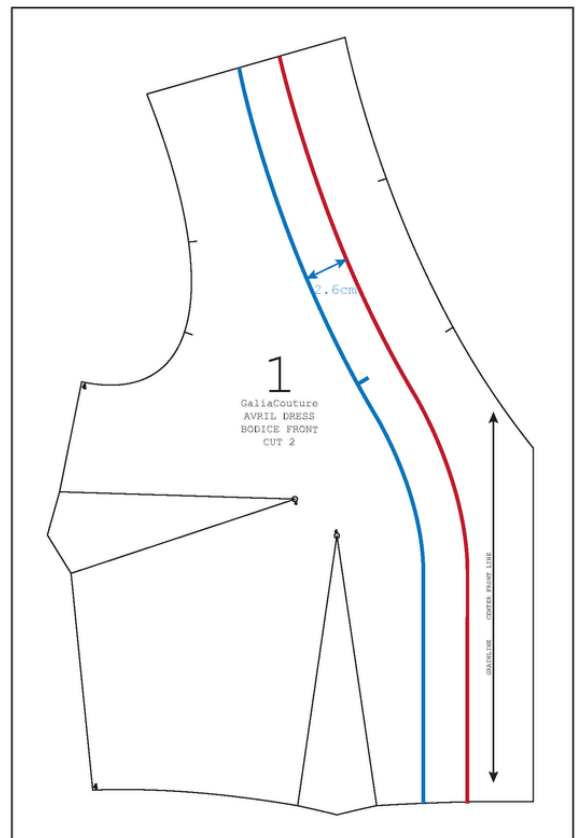


4. Work with Outer piece #3:

Add a notch on the curved line of Facing #3, opposite to the lower notch on the neckline.

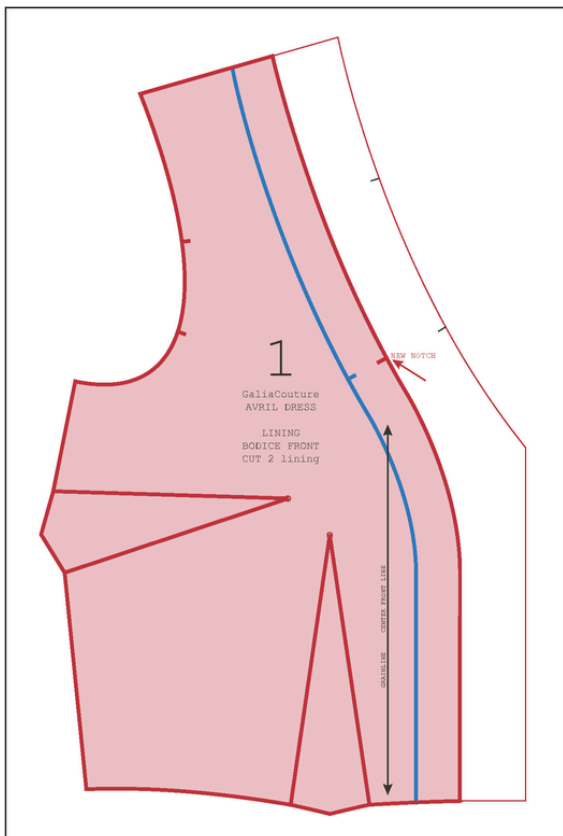
Place the Facing Front #3, matching Center Front line and shoulder. Trace the inner curved line of Facing.

Transfer the new notch on the traced curved line. Remove the Facing.



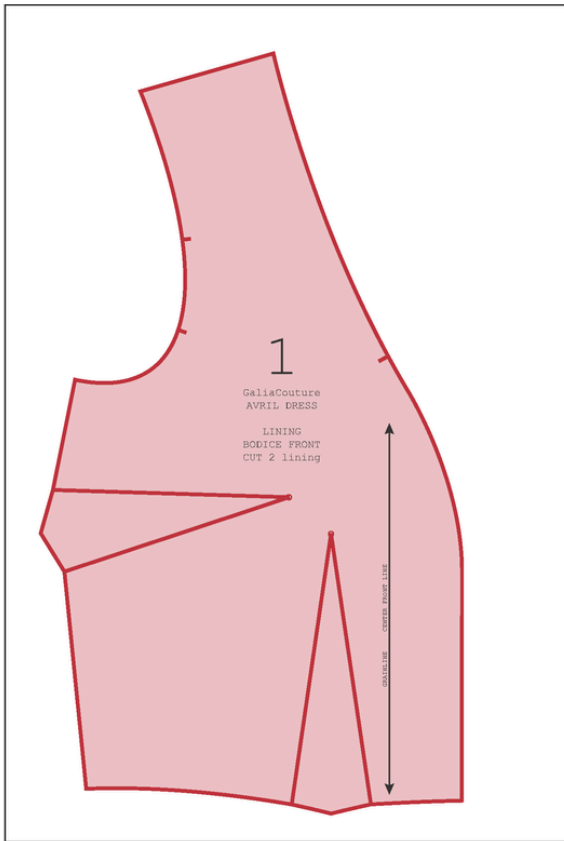
5. Draw the new curved line:

Draw a line, parallel to the traced curved line, 2,6 cm (1 in) outward (towards the center front line and neckline).

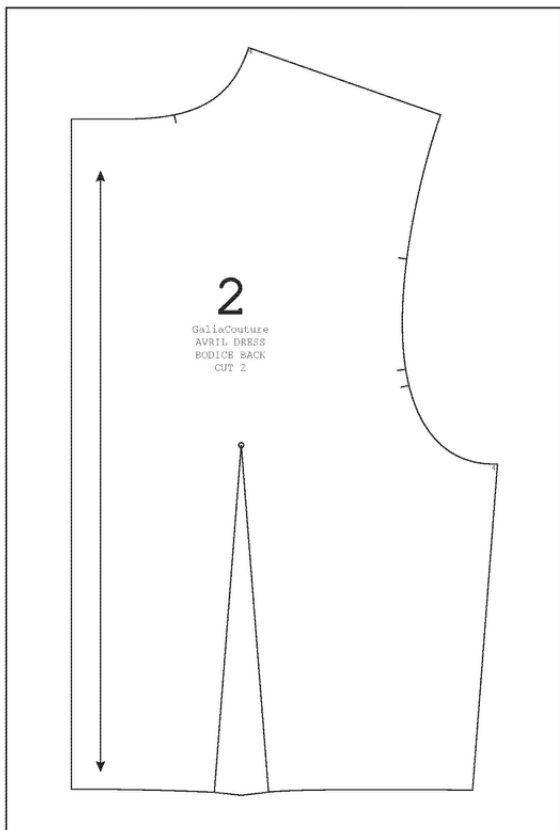


6. Outline the new Lining Bodice front:

Outline the Lining Bodice Front - the new neck and center front lines (add a notch opposite to the notch, added in step 1; The other lines (waistline, shoulder, armhole and side seam are the same). Cut the new Lining Bodice Front.



BODICE BACK



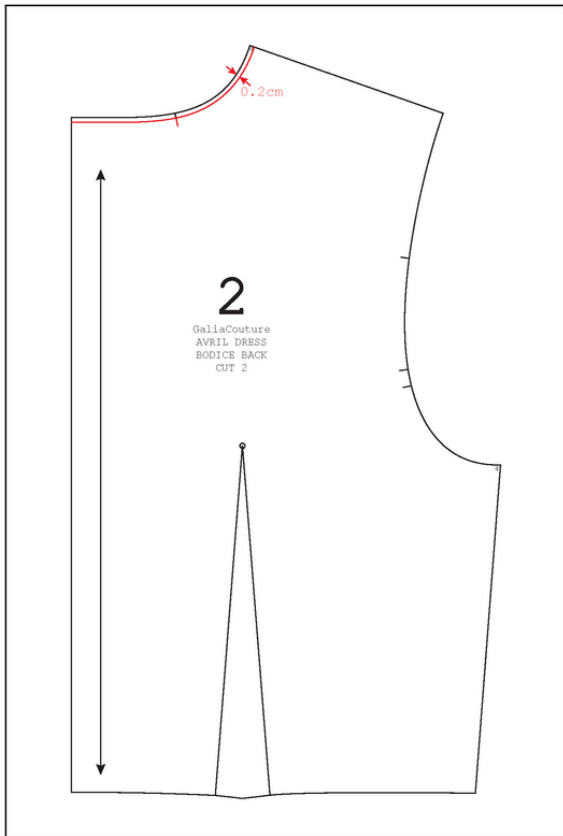
1. Work with Piece #2:

Lay the pattern piece #2 on a large piece of paper.

Put some paper weights to fix the pattern piece and paper.

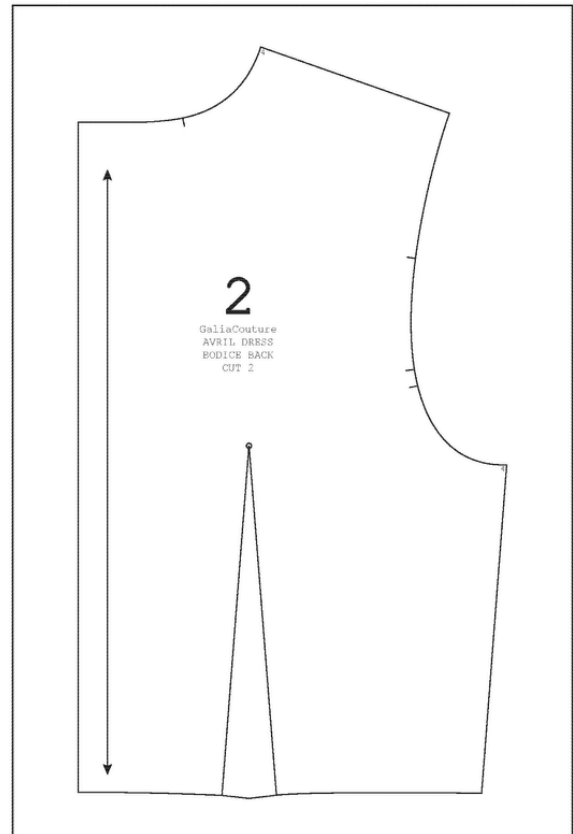
Outline the Bodice Back, draw the darts and notches.

Remove Lining piece #2.



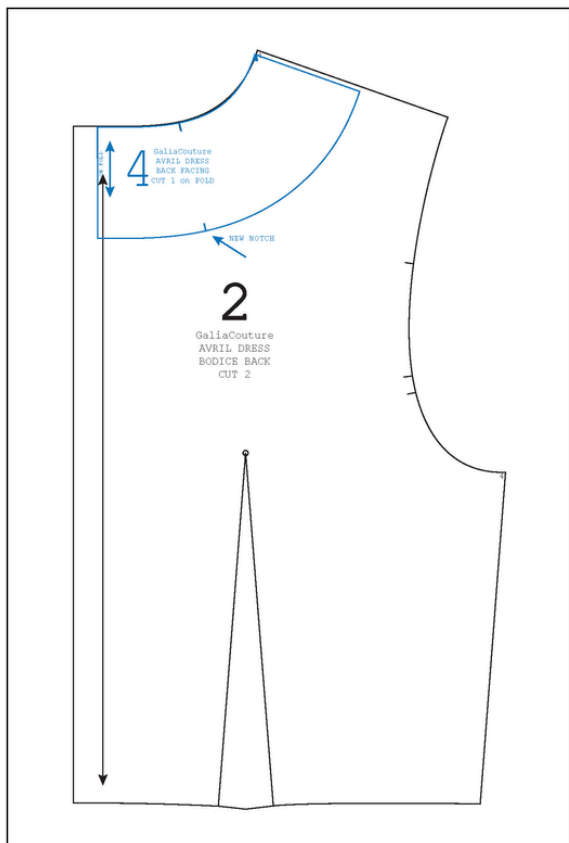
2. Draw new Back neck line:

Draw a line, parallel to the back neckline, 0.2 cm inward. This is the new back neckline.



3. Outline the Bodice Back:

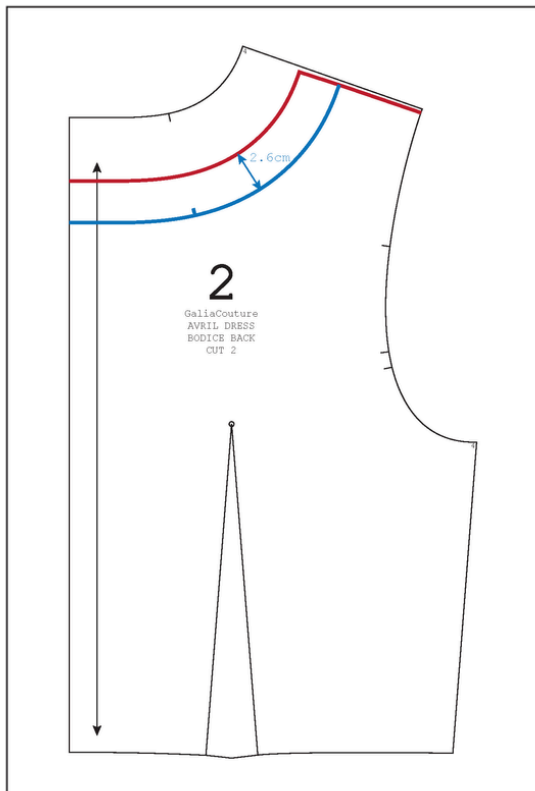
Outline the Lining Bodice Back piece - the new neck line; The other lines (center back line, waistline, shoulder, armhole and side seam are the same).



4. Work with Outer piece #4:

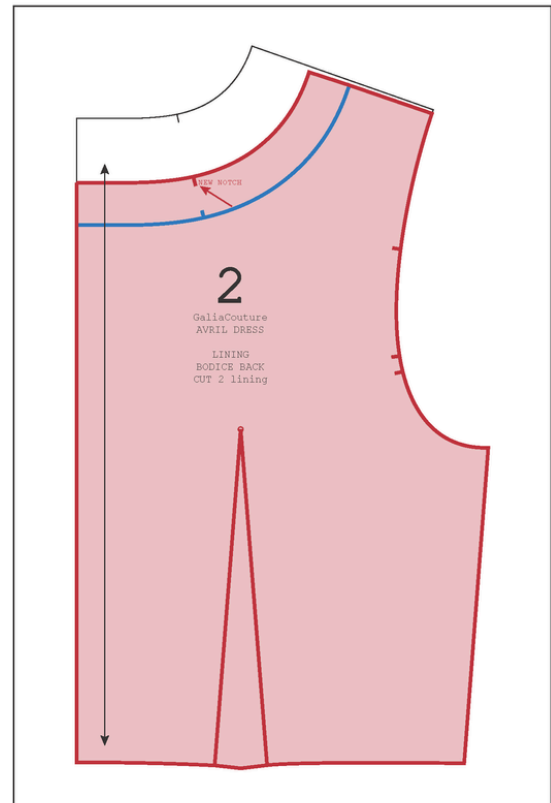
Add a notch on the curved line of Facing #4, opposite to the notch on the neckline.

Place the Facing Front #4, matching the neckline and the notch on it. Trace the shoulder and inner curved line of Facing. Transfer the new notch on the traced curved line. Remove the Facing.



5. Draw the new curved line:

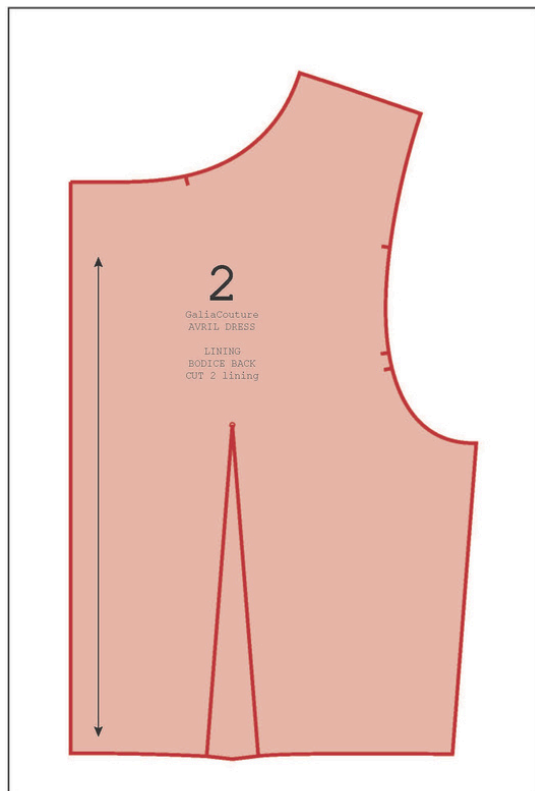
Draw a line, parallel to the traced curved line, 2,6cm (1 in) outward (towards the neckline). Extend the shoulder line to the armhole.



6. Outline the new Lining Bodice Back:

Outline the Lining Bodice Back - the new neck line (add a notch opposite to the notch, added in step 4; the extended shoulder line. The other lines (waistline, armhole and side seam are the same).

Cut the new Lining Bodice Back.



For cutting Lining place the pattern pieces:

Lining Bodice Front, Lining Bodice Back, Lining Skirt Front and Lining Skirt Back. The upper pair of pocket pieces can be cut from lining fabric.

Use the original Avril dress layplans to cut the Lining.

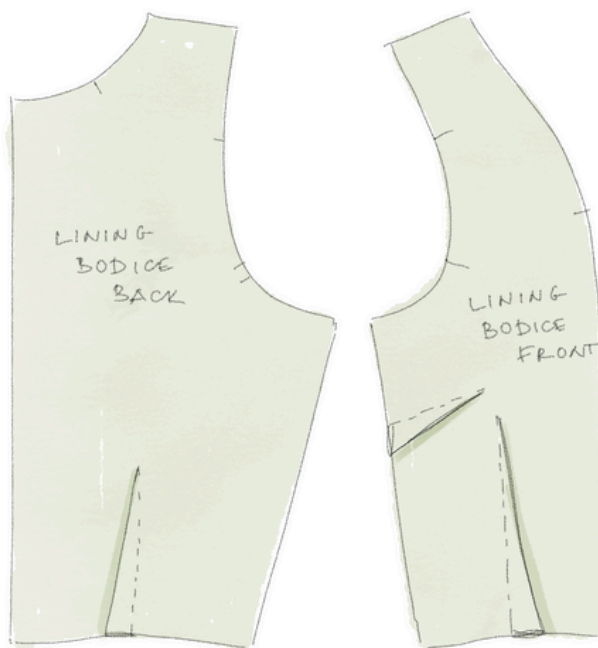
2. HOW TO SEW AVRIL DRESS WITH LINING

ASSEMBLING LINING BODICE

1. Darts:

Bust darts. Draw the dart point and its two legs with chalk. With Right Sides Together, fold the fabric across the length of the dart. Pin along the entire length of dart. Also mark with pin the dart point. Sew the darts, starting at the side seam. Press the darts towards the waist.

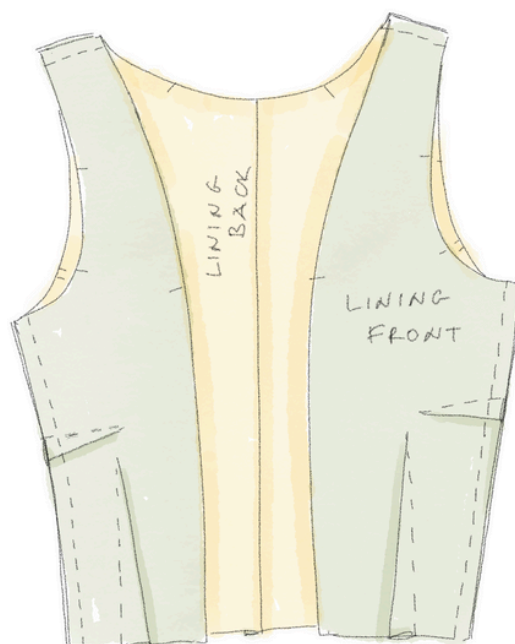
Front and Back Waist darts. Draw the dart point and its two legs with chalk. With Right Sides Together, fold the fabric across the length of the dart. Pin along the entire length of dart. Also mark with pin the dart point. Sew the darts, starting at the waist edge. Press the darts towards the center of bodice.



2. Assembling Lining Bodice:

With right sides together, pin the two parts of Bodice back and sew the central back seam. With right sides together, pin and sew Bodice Back to the Bodice Front at shoulders and side seams.

Finish with an overlock or zigzag the seam allowances of central back seam, shoulders and side seams. Press the side and shoulders seam allowances towards the back, the central back seam towards the left side.

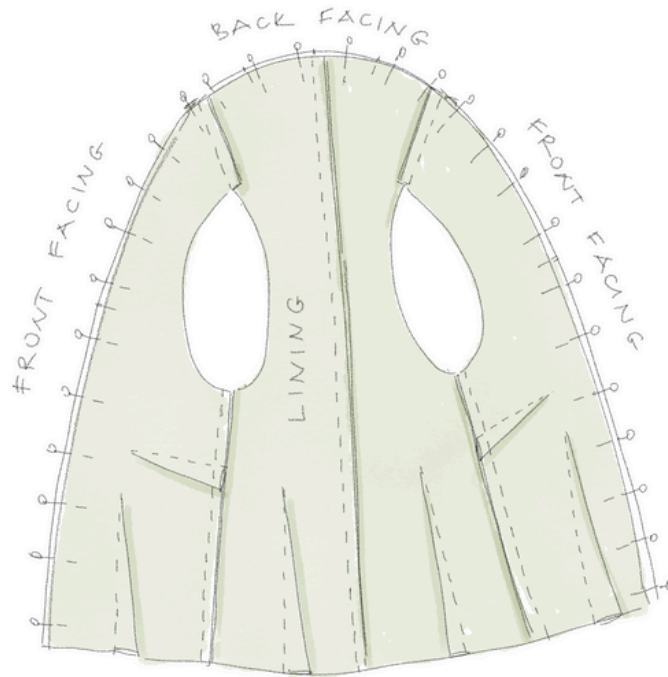


3. Attaching Facing to the Lining Bodice:

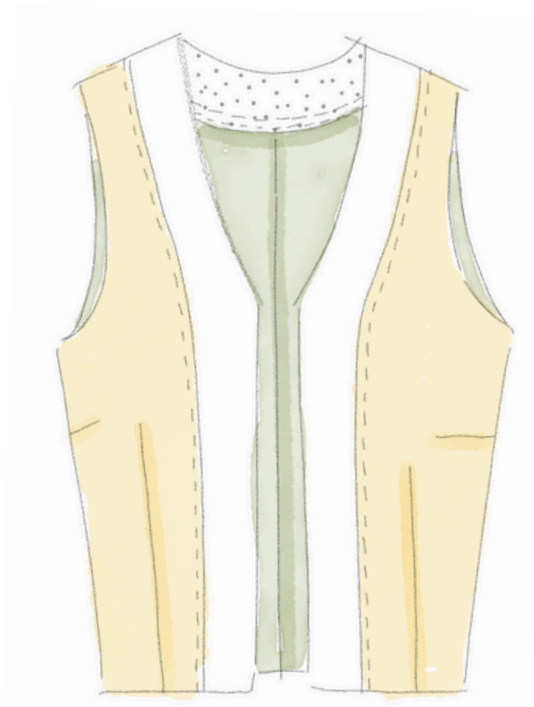
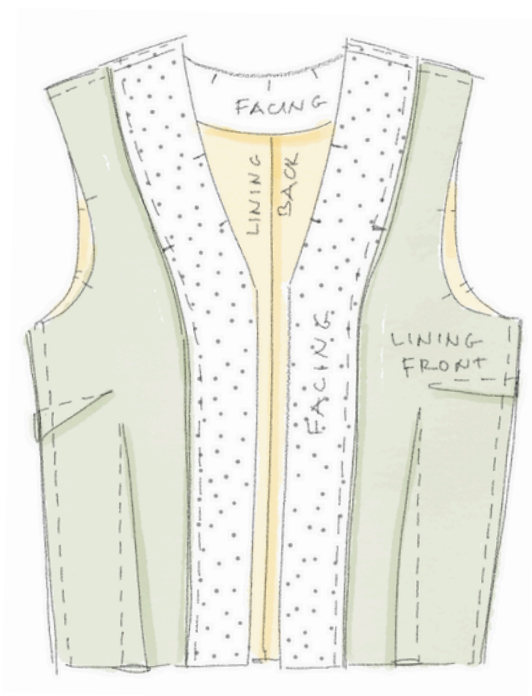
First, even the lengths of Front Facing with the Front Center bodice piece at the waistline.

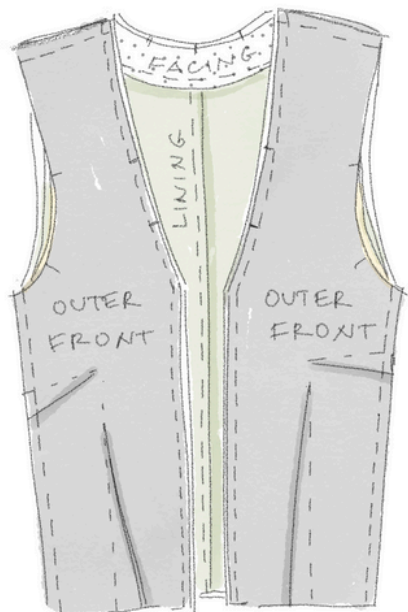
With right sides together, pin and stitch the Lining to the Facing at the curved lines, matching notches and shoulder seams. Clip the seam allowance of Lining neckline to lay perfectly on Back Facing.

Finish the seam allowances with an overlock or zigzag stitch. Press the seam allowances towards the Lining.



If you wish, topstitch the seam.





4. Attaching the Facing to the Outer Bodice:

With right sides together, pin the Facing to the bodice at the front and neckline edges, matching notches, back seam and shoulder seams. Sew the seam.

Grade the seam allowances (trim the seam allowance of Facing to half of its width).

Clip into the seam allowance of Back neckline every 1 cm (3/8 in).

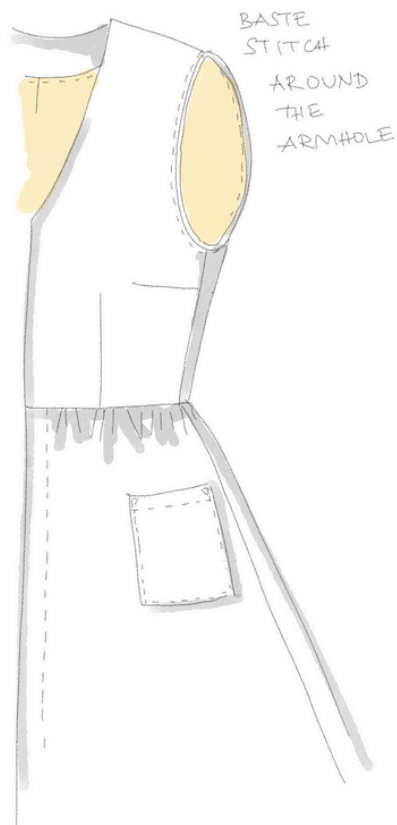
Finish the seam allowances with an overlock or zigzag stitch, spreading the back neckline seam allowances.

5. Understitch:

Press the seam allowances towards the Facing, and sew an understitch (starting at waistline and ending as far as you can up to the top of front line. On neckline, starting as close as you can from top of front line).

Turn the Facing with Lining to the inside of bodice.

Press the front line and neckline, rolling the seamline 1 mm (1/16 in) to stay hidden inside of the bodice.



ATTACHING THE SLEEVES

Align the Outer and Lining bodice at armhole, pin it and sew a baste stitch (by machine or hand) 0.5 cm (1/4 in) from the armhole edge.

The bodice is prepared for attaching the sleeves. The technique is the same as for Avril dress without lining. Follow the steps in The Avril dress booklet.

SEWING SKIRT

First press the Front (Button) plackets of Outer Front Skirt, without edgestitching (see the instructions in Avril dress Booklet). Then sew the side seams of Outer skirt.

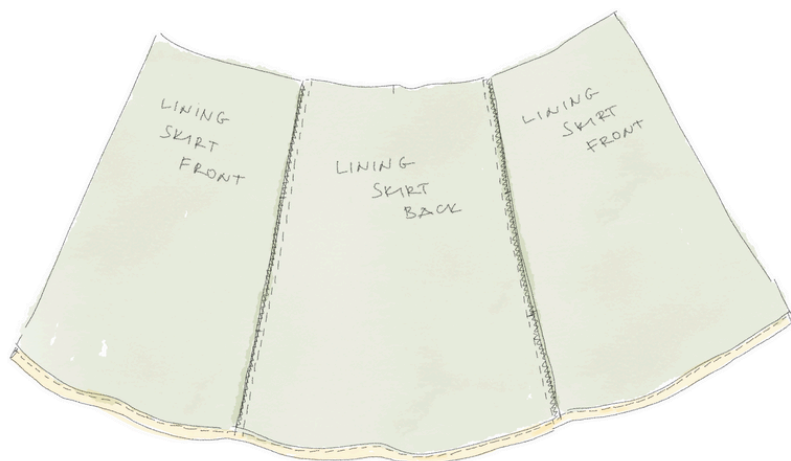
1. Sew the Lining Skirt:

With right sides together, pin and sew the side seams of the Lining Front and Back skirt pieces. Finish the seam allowances with an overlock or zigzag stitch. Press them towards the front .

2. Sewing the hem: Cut the free corners of the sewing allowances of side seams and center back seam (if present) at the hem line.

Finish the raw edge of the hem, if the fabric is easily fraying. Sew 1 cm (3/8 in) from the raw edge along the skirt hem. Turn in the hem along this stitch and press.

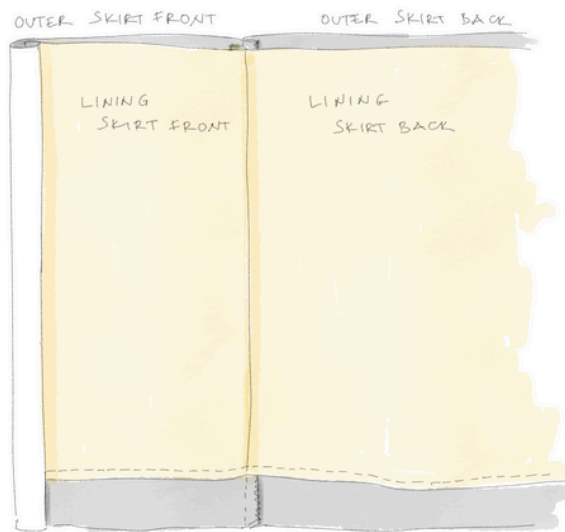
Turn in another 1 cm (3/8 in), press and stitch close to the folded edge. Press well the hem.

**2. Attaching Lining skirt to the Outer skirt:**

Unfold the Button plackets and with right sides together, pin and sew the center front lines of Outer and Lining front skirt, aligning them at the waist.

The left and right sides of Lining should be ending at the same distance above the Outer hem line.

Finish the seam allowance with an overlock or zigzag stitch.

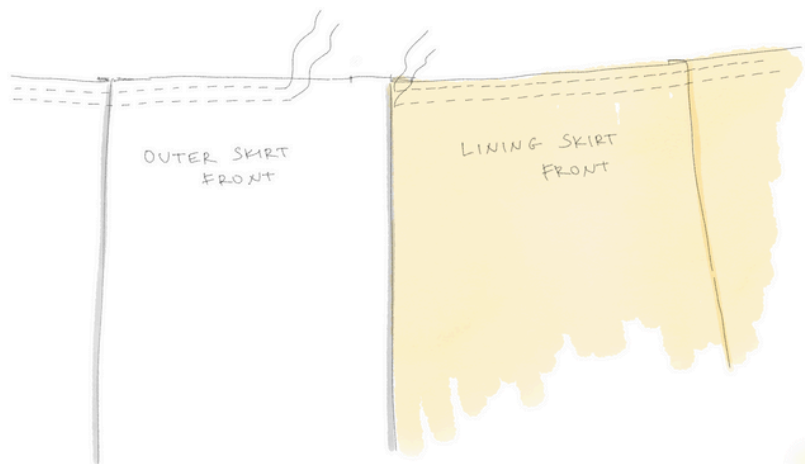
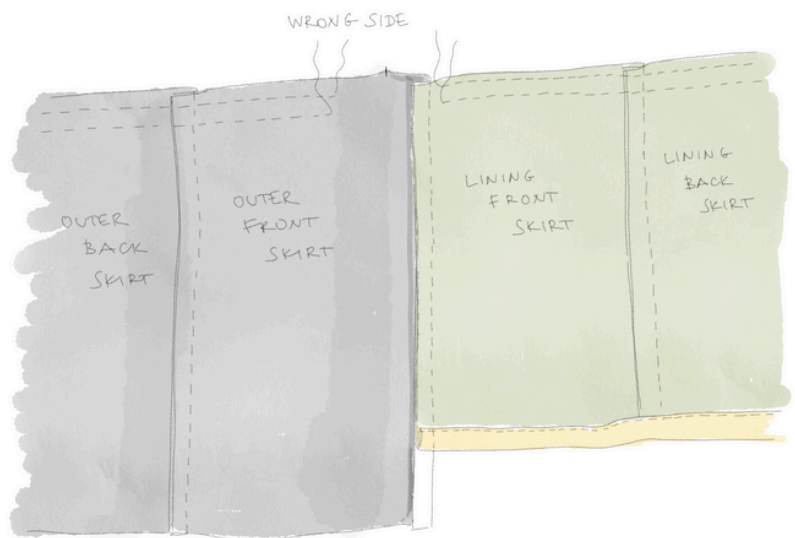


3. Gathering the waistline:

Sew two parallel gather stitches on the waist of Outer skirt, beginning and ending 5 cm (2 in) from the front stitches.

Sew two parallel stitches on the waist of Lining skirt, beginning and ending at the front stitches.

First stitch is positioned about 0.6 cm (1/4 in) from the waist edge. Second stitch is 1.5 cm (5/8 in) from the waist edge. Leave long thread tails.)



ATTACH THE SKIRT TO THE BODICE

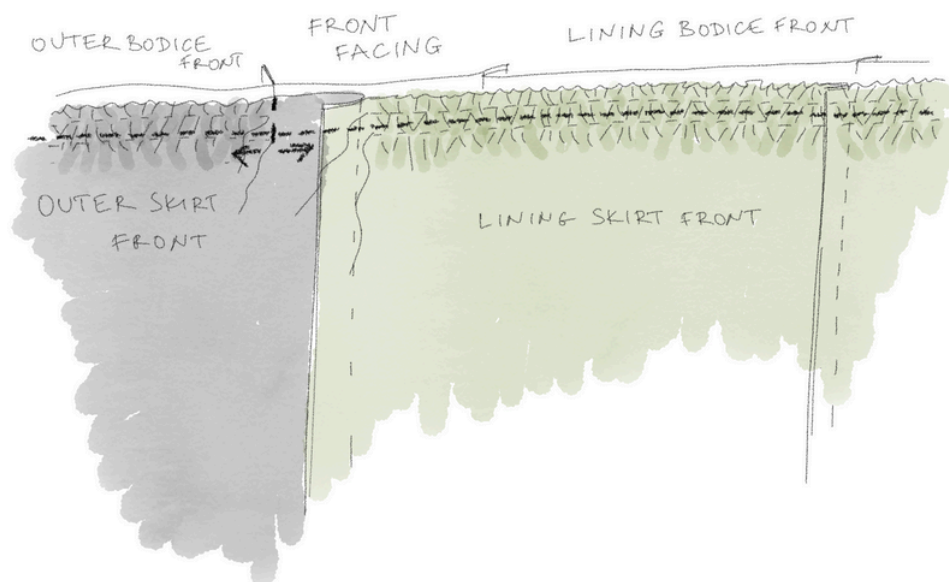
1. Attach the skirt to the bodice:

With right sides together, pin the Outer skirt to the assembled Outer bodice, matching the side seams and matching the center back. Align the front line (Folded center front edge) of skirt with the vertical seam, joining the Bodice with Facing.

Pull the gathering threads on skirt gently, distributing equally in every 1 cm (3/8 in) and pin precisely.

Sew the waistline seam as the skirt is on top. You can use tweezers to help gathering to stay in place. Remove the lower gathering stitch. Press well with iron to make the gathered seam allowances as flat as possible.

Clip into the seam allowance (Clip only Bodice around the waistline darts and side seams. The seam allowance of skirt stays unclipped.)



With right sides together, pin the Lining skirt to the assembled Lining bodice, matching the side seams and matching the center back. The stitch begins, where the outer waist seam ends.

Pull the gathering threads on skirt gently, distributing equally in every 1 cm (3/8 in) and pin precisely.

Sew the waistline seam as the skirt is on top. You can use tweezers to help gathering to stay in place. Remove the lower gathering stitch. Press well with iron to make the gathered seam allowances as flat as possible.

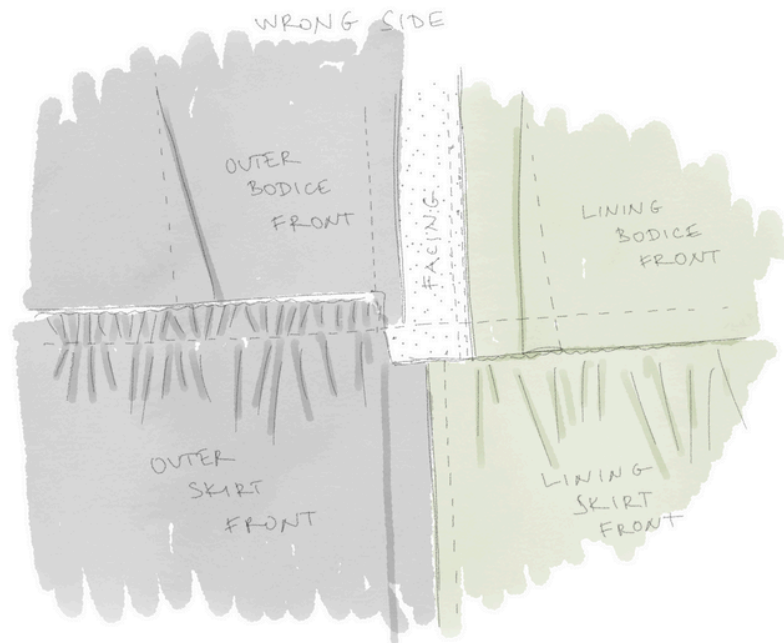
Finish the outer and lining waist seams with an overlock or zigzag stitch.

Remove the upper gather stitches.

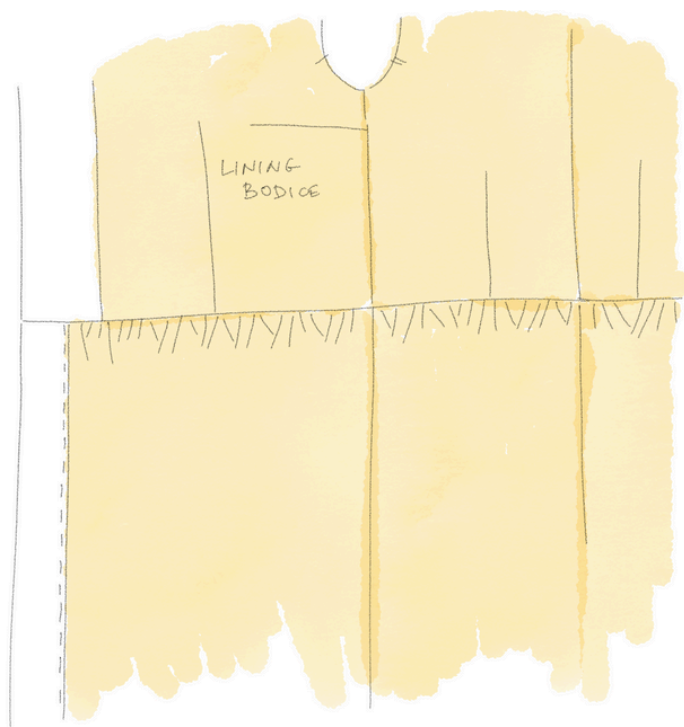
SEWING

Make one clip (long almost to the waist stitch) on the waist seam allowances, on left and right center front edge. Press the Outer waist seam allowances towards the bodice, press the Lining waist seam allowances towards the skirt.

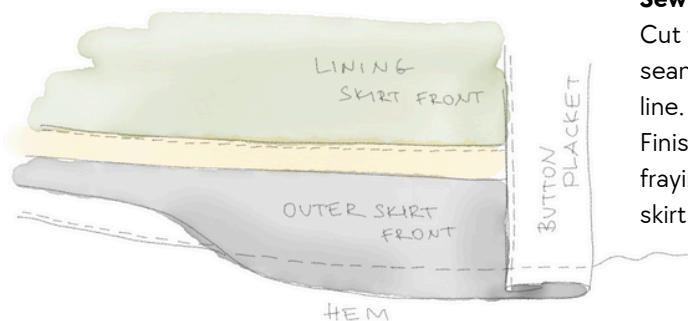
Turn the dress with right side out.



This is how the dress looks inside, with attached bodice to the skirt. Sew a top stitch to the button plackets, close to the inner folded edge. Stitch only the Outer waistline seam with topstitch or edgestitch (see the instructions in Avril dress Booklet).



HEMMING OUTER SKIRT

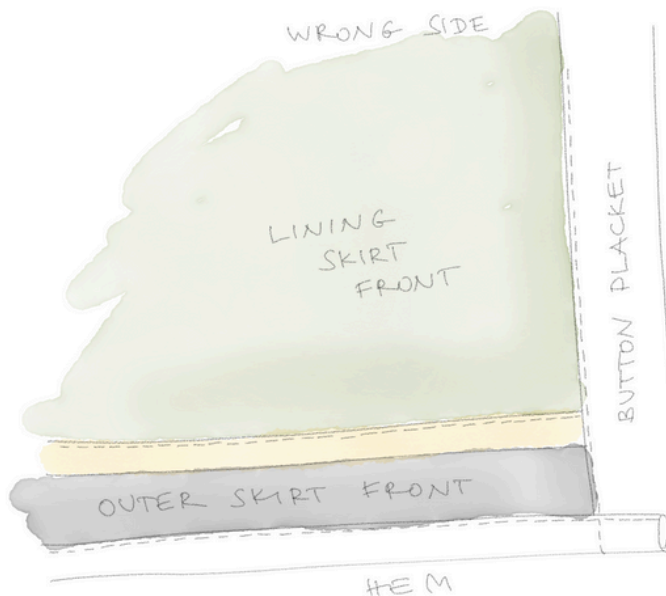
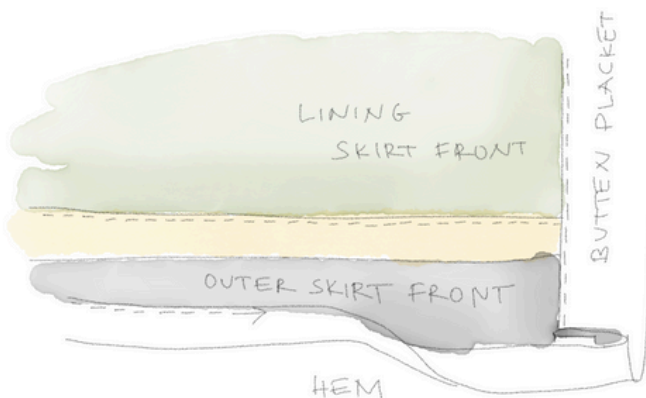


Sewing the hem:

Cut the free corners of the sewing allowances of side seams and center back seam (if present) at the hem line.

Finish the raw edge of the hem, if the fabric is easily fraying. Sew 1 cm (3/8 in) from the raw edge along the skirt hem. Turn in the hem along this stitch and press.

Turn in another 1 cm (3/8 in), press and stitch close to the folded edge. Press well the hem.



Proceed to the next steps in Avril dress Booklet.

Avril dress with lining

Now your Avril dress is ready to wear!
Hope you enjoy learning how to make your
perfect and unique garment!
It was a true honor and pleasure for me to
prepare this tutorial for you! And I would be
delighted to see your creations.

Thank you!



#bygaliapatterns
#bgavrildress

